

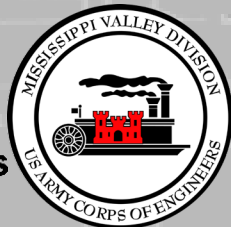
ASSOCIATION OF LEVEE BOARDS OF LOUISIANA

Maj. Gen. Diana Holland
Commanding General
Mississippi Valley Division
Vicksburg, Mississippi

08 December 2021



US Army Corps
of Engineers®





DIVISION AND DISTRICT LEADERSHIP



MVD
MG Diana Holland
Commanding General



MVD
Mr. Eddie Belk
Director of Programs



MVD
Mr. Jim Bodron
Director of Regional Business

ST. PAUL
COL Karl Jansen



ST. LOUIS
COL Kevin Golinghorst



VICKSBURG
COL Robert Hilliard



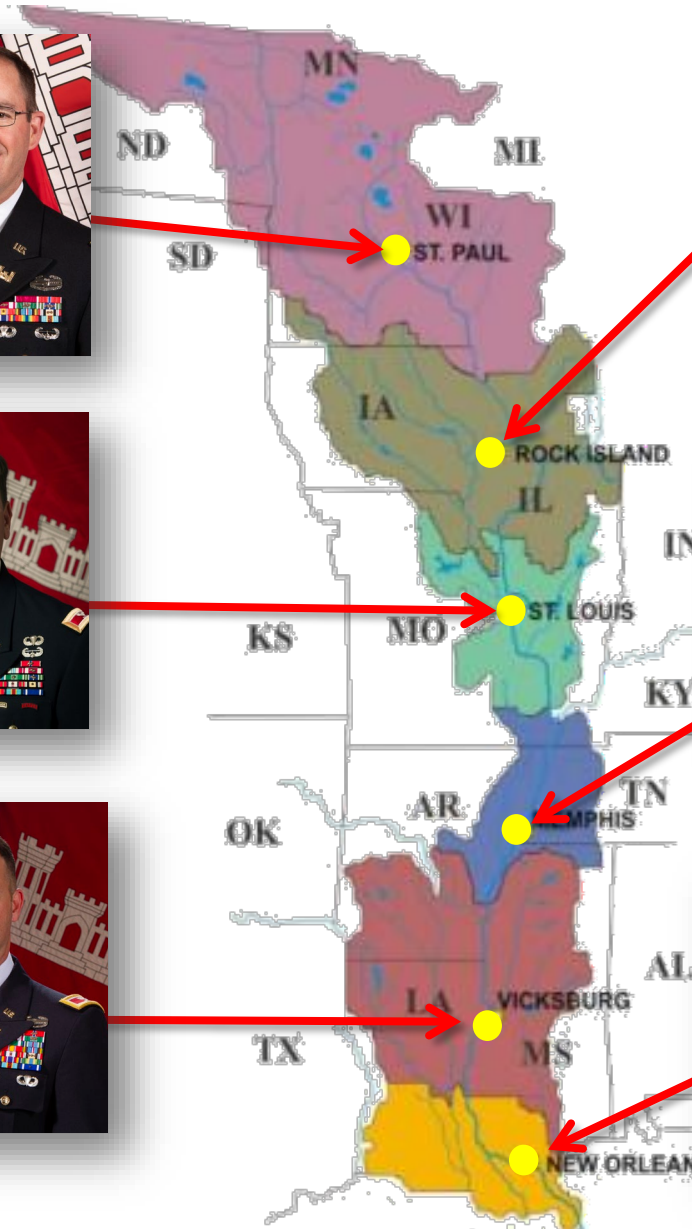
ROCK ISLAND
COL Jesse Curry



MEMPHIS
COL Zachary Miller



NEW ORLEANS
COL Stephen Murphy





MISSISSIPPI RIVER COMMISSION



- **Presidentially appointed**
- **1879 - Congress established**
- **Seven members:**
 - ✓ **3 Corps Officers**
 - ✓ **1 NOAA Admiral**
 - ✓ **3 Senior Civilians**
(appointed by POTUS; confirmed by Senate)
- **Authority extends entire river - Headwaters to Head of Passes**
- **Oversees MR&T Project – Corps Districts carry out the work**



Maj. Gen. Diana Holland
President



Hon. Norma Jean Mattei, Ph. D.
Civilian Member
2012



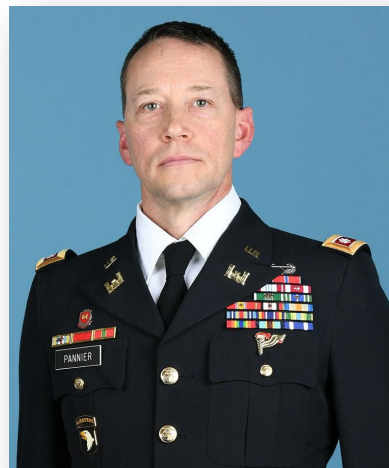
Hon. James Reeder
Civilian Member
2018



Hon. Riley James
Civilian Member
2020



Capt. Ben Evans
NOAA
(Designee)



Col. Andy Pannier
Secretary



Col. Kimberly Peeples
Great Lakes &
Ohio River
Division



Col. Geoff Van Epps
Northwestern
Division

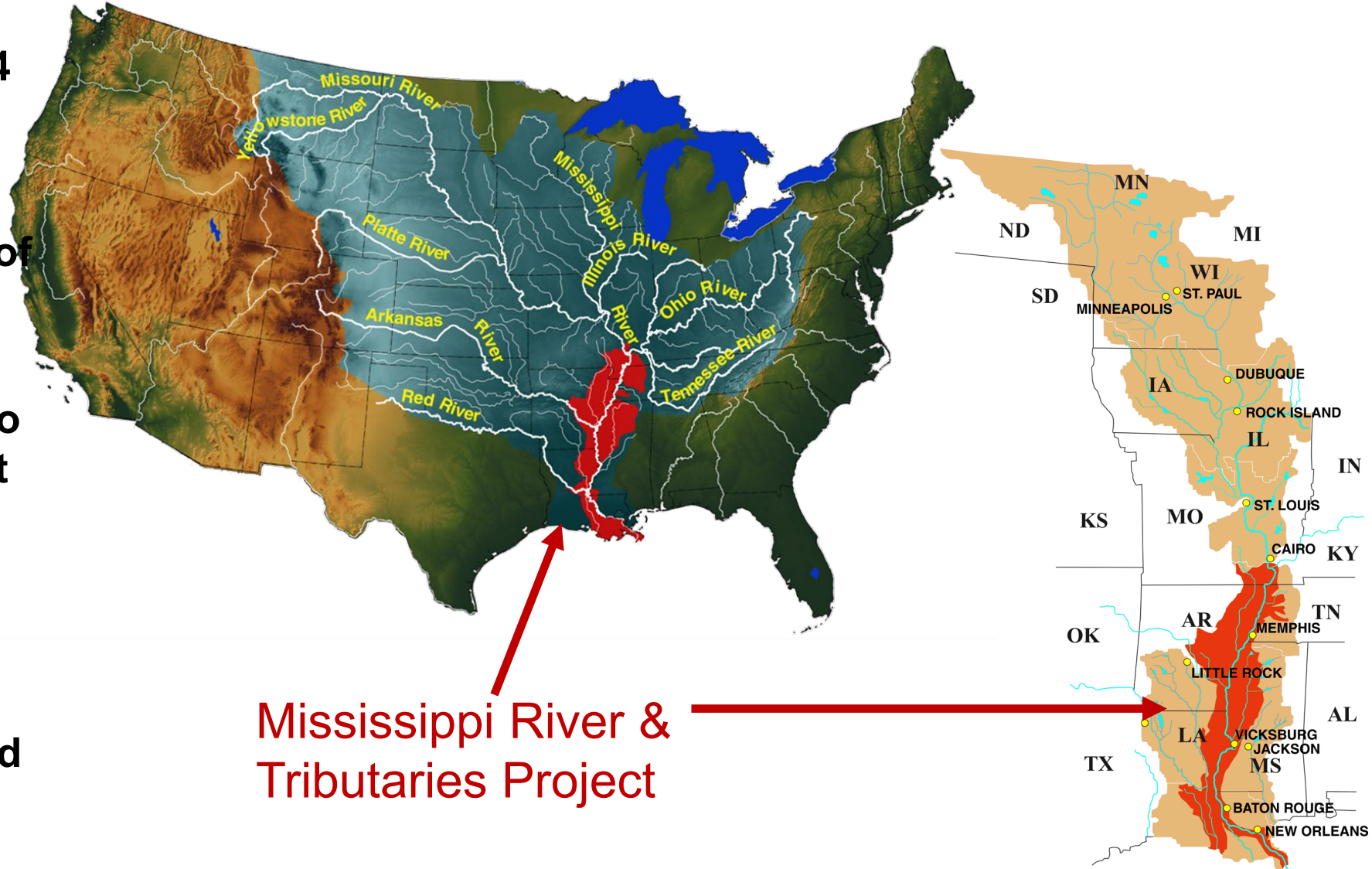


MISSISSIPPI RIVER BASIN

and Mississippi Valley Division (MVD)



- USACE mission in the Valley dates back to 1824
- MVD is 1 of 9 USACE Divisions (Regions)
- 6 Districts; > 4,500 Dept of the Army Soldiers and Civilians
- 250+ tributaries drain into Mississippi River, largest are the Ohio, Arkansas and Missouri rivers
- 41% of US water drains through this basin
- 95% of all US imports and exports move on these waterways



Mississippi River & Tributaries Project

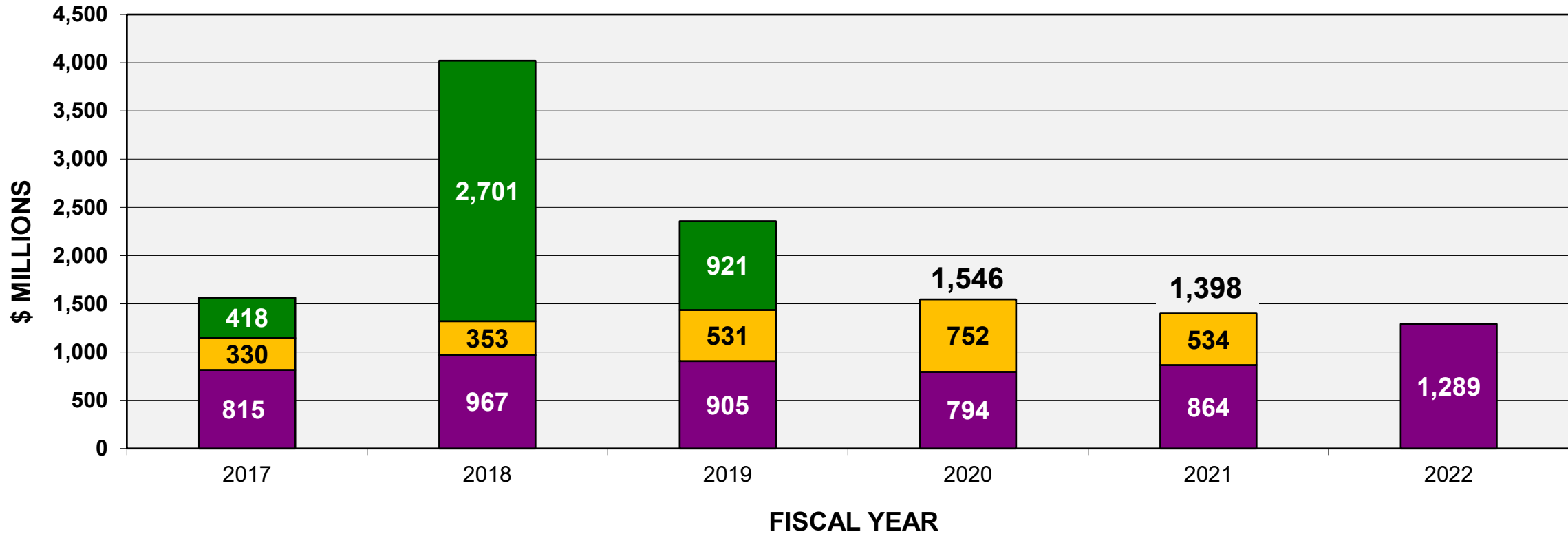


MISSISSIPPI RIVER & TRIBUTARIES PROJECT

- **Consists of levees, channel stabilization, tributary improvements and floodways**
- **35,000-square-mile flood plain**
- **Ten million acres of farmland, numerous urban centers, 4.5 million people protected**
- **\$16.2 billion invested; \$1.75 trillion in flood damages prevented**
- **105 to 1 return on investment**
- **Performing well where complete/maintained; vulnerable where it is not complete/maintained. The system will be at its best once complete**
- **Work remaining: Main Stem Total = \$6.7 billion**
- **A project that changes and adapts to emerging conditions**



MISSISSIPPI VALLEY DIVISION FUNDING



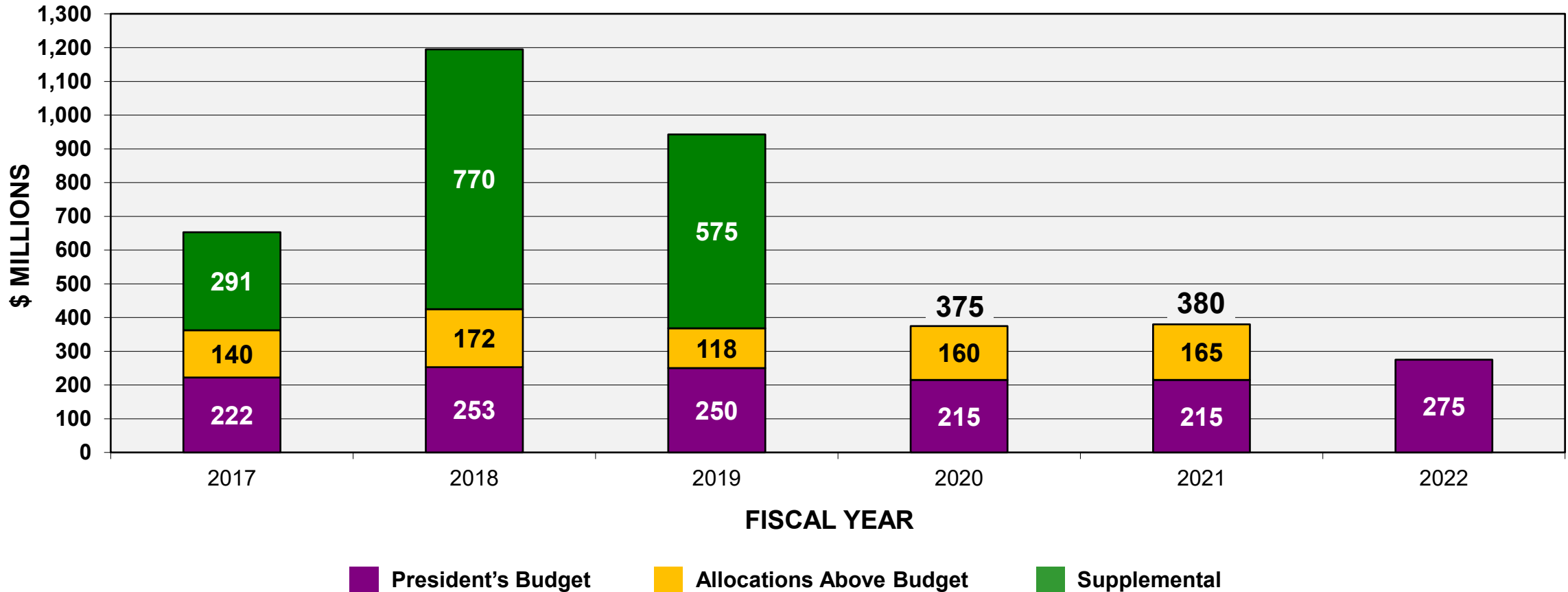
■ President's Budget ■ Allocations Above Budget ■ Supplemental

This chart shows the budget amounts, the allocations above the budget amount, and the supplemental appropriations enacted for civil works appropriations in MVD (Investigations, Construction, O&M, MR&T, FC&CE, FUSRAP, & Regulatory) through 2022. FY2020-2021 Pbud amounts exclude FUSRAP, as they were budgeted under DOE. Supplemental appropriations exclude FUSRAP & Regulatory.

President's Budget reflects 1% withholding in O&M account and any Conference adjustments.



MISSISSIPPI RIVER AND TRIBUTARIES FUNDING



This chart shows the budget amounts, the allocations above the budget amount, and the supplemental appropriations that have been received for civil works appropriations in MR&T (Investigations, Construction, & Maintenance) over the last several years.



FLOOD RISK MANAGEMENT HIGHLIGHTS



Mississippi River Levees

- ✓ Program that extends from Cape Girardeau, MO to the Gulf of Mexico
- ✓ Successfully passed historic flood events in 2011 and 2019, performed as designed
- ✓ Signed Record of Decision (February 2021) for the Supplemental Environmental Impact Statement (SEIS)- covers 143 additional construction items across seven states

Morganza to the Gulf of Mexico

- ✓ To reduce risk from flooding and storm surge Terrebonne and Lafourche Parishes
- ✓ PPA to be signed 2021
- ✓ Positioned to award 1st Construction Contract (Humble Canal Floodgate Preload)



Fargo-Moorhead Metro Area

- ✓ To protect the Fargo-Moorhead metro area (230K people) from extreme flooding from the Red River (2009 flood).
- ✓ The first Public-Private Partnership (P3) in USACE history. Reduces federal funding requirements, accelerates completion, reduces overall cost.
- ✓ USACE construction of major features underway.

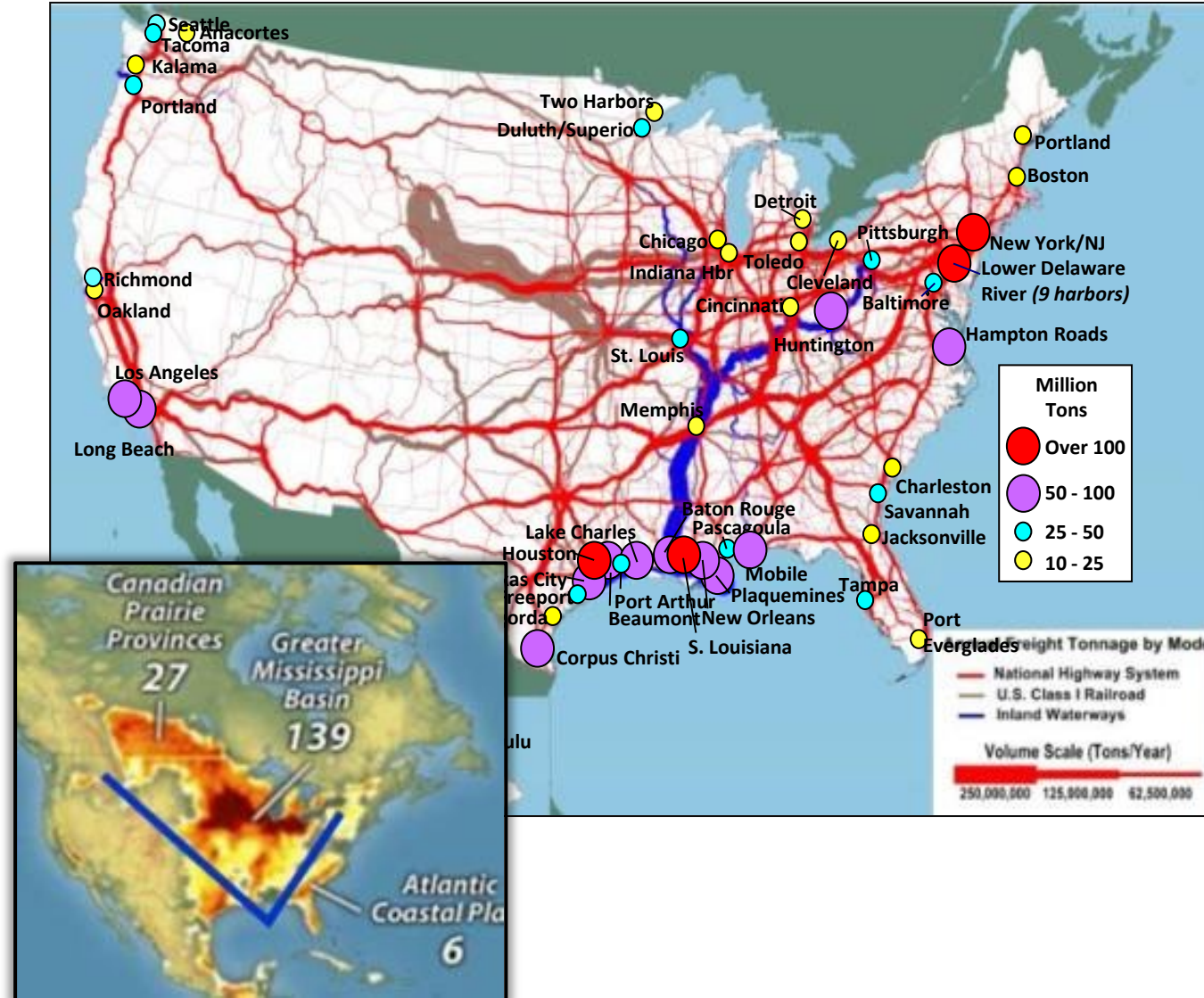




U.S. PORTS AND INLAND WATERWAYS: VITAL TO OUR NATIONAL ECONOMY

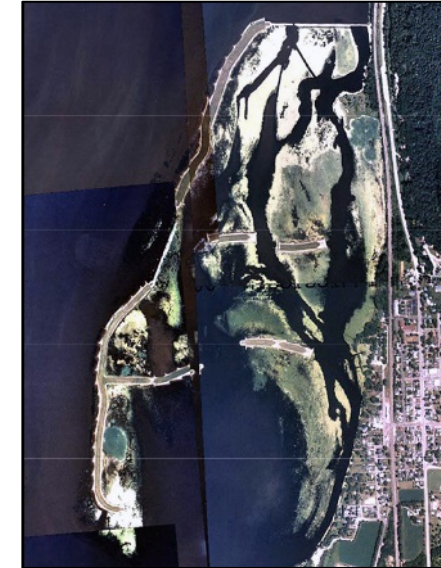
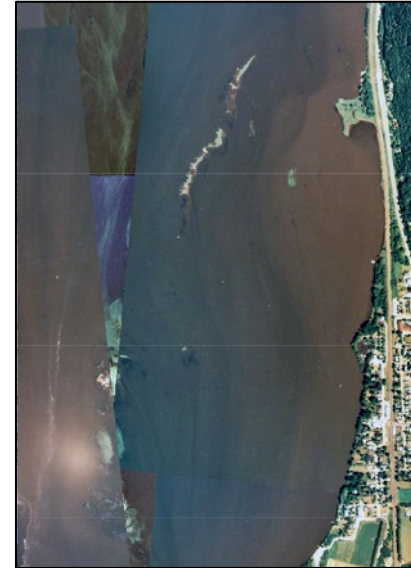


- 95% of all U.S. imports & exports (about \$1.4 trillion) move on waterways and/or ports.
- A network of navigable waterways, integrated with a system of inland harbors, deep draft ports and reduced flood risk for surrounding communities, industry and agriculture.
- Most agricultural lands are within 120 miles of a navigable river.





NAVIGATION AND ECOSYSTEM SUSTAINABILITY PROGRAM (NESP)



Lock Upgrades to Improve Navigation (7 locks)

Ecosystem Restoration (225 projects)

- Strong bi-partisan, stakeholder support – coalition of states, navigation, ecosystem, agricultural and other organizations
- Multi-pronged approach for restoring our rivers from Minneapolis to Cairo, IL on the Mississippi River along with portions of the Illinois River.
- 40% of design is complete, awaiting New Start and construction funding



2021 HURRICANE IDA



U.S. ARMY CORPS OF ENGINEERS HURRICANE IDA

RESPONSE DAY

FEMA MISSION ASSIGNMENTS **11** OPEN **19** CLOSED

FUNDING TO DATE **\$330,761,125**

PERSONNEL DEPLOYED / ENGAGED **236/99**

LANDFALL: **AUGUST 29, 2021**



TEMPORARY ROOFING | BLUE ROOF INSTALLS

Number of eligible Parishes: **25**



% COMPLETE FOR BLUE ROOF INSTALLS

Number of Blue Roofs Installed: **33,625**

USACE AUTHORITIES



- Supporting inter-agency efforts to reopen navigation channels.



- Technical Engineering with Local and State partners.

INFRASTRUCTURE | ASSESSMENTS



Facility Assessments Completed: **208**

Water Assessments Completed: **23**

Waste Water Assessments Completed: **122**

UNWATERING |



Levee Cuts **21**



Pump Locations Planned **13**



Pumps Installed **13**



Locations Closed **21**



Pumps In Use: **7**

The USACE dewatering missions in all Parishes are nearing completion. The controlled engineer cuts in the Non-Federal levees in Plaquemines Parish that USACE executed to promote drainage and speed up dewatering are now closed and armored in preparation for any future events.

TEMPORARY EMERGENCY POWER | GENERATOR ASSESSMENTS/INSTALLS



% COMPLETE FOR GENERATOR INSTALLS

82 INSTALLS COMPLETE



OPERATION BLUE ROOF: 888-ROOF-BLU (766-3258)
TEMPORARY EMERGENCY POWER GENERATOR HOTLINE: 877-214-9112

(AS OF: 2-NOV 0800)

Investment

- Hurricane/Storm Risk Reduction System (HSDRRS)
- \$14.9B since Hurricane Katrina

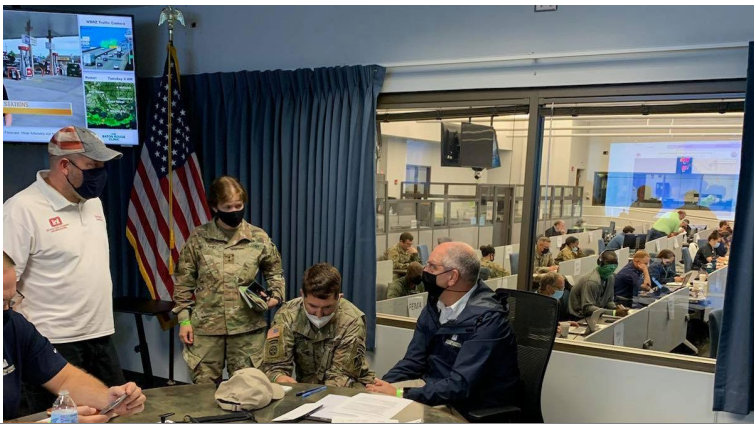
Teamwork

- Within USACE
- State of Louisiana
- Governor's Office
- GOHSEP
- CPRA
- Parish leaders
- LA National Guard
- Navigation industry
- FEMA



Project Partners and Partnerships:

Essential to Success!!



MVD and MVN senior leadership work with LA Gov Edwards, LA Lt. Gov Nungesser, and FEMA in response to Hurricane Ida (Sep 2021)

The Corps achieves very little on its ownWe need strong relationships for everything we do!

Together We Make a Powerful Team....



Yazoo Backwater Project Site Visit in MS with ASA CW, Sponsor, Mississippi Levee Board (Aug 2021)



Brazilian Delegation Visit (Nov 2021)

Thank You!!



MVD and MVP leadership meet with Senator Hoeven, ND Gov Doug Burgum, ND Congressman Armstrong and Fargo-Moorhead metropolitan leaders to discuss Fargo-Moorhead Diversion project (Jun 2021)