



Association of Levee Boards of Louisiana Conference

Dec. 8, 2021

Pat Forbes, PE

Louisiana Office of Community Development

LOUISIANA
WATERSHED
INITIATIVE

working together for sustainability and resilience



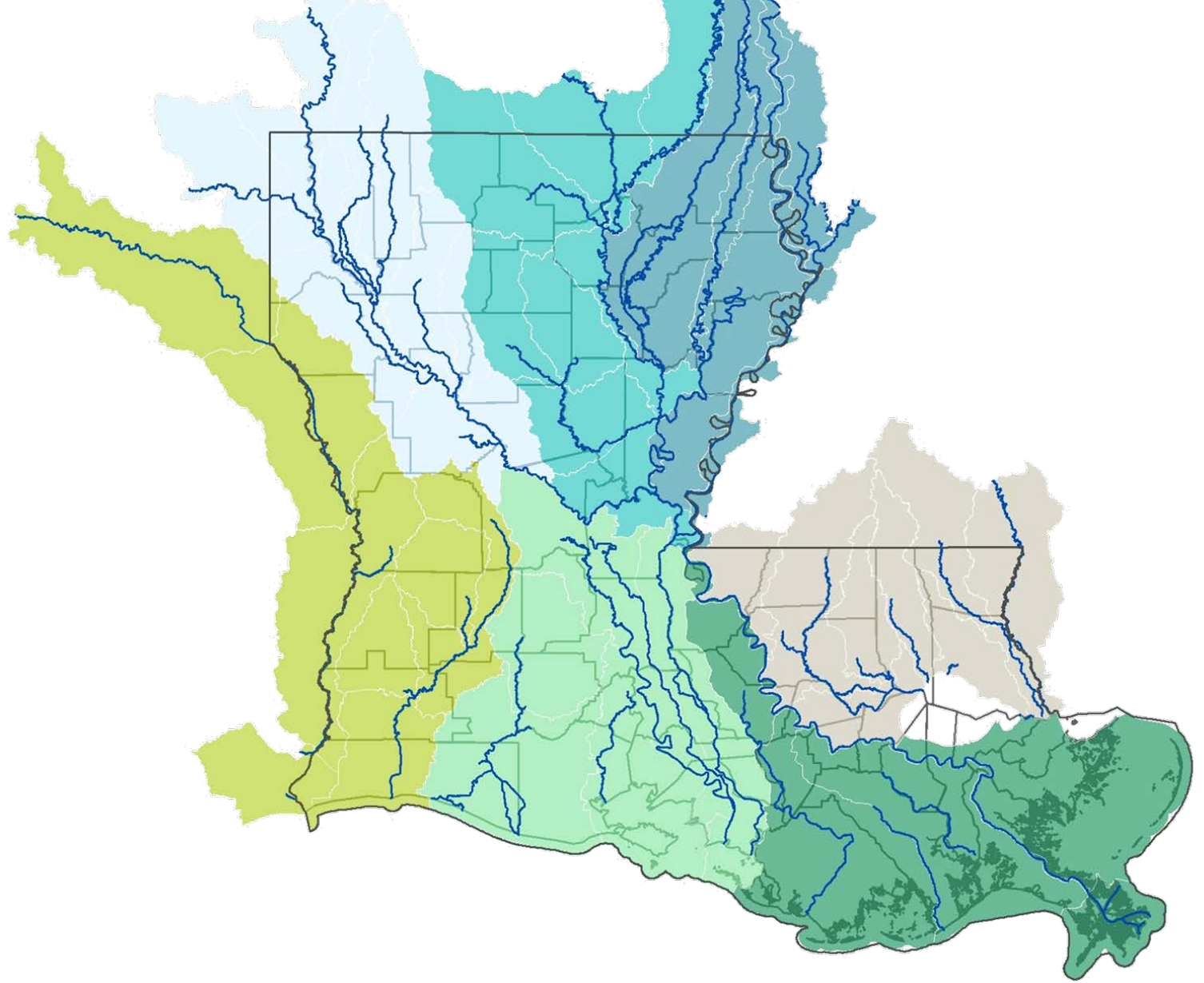
AGENDA

1. Louisiana Watershed Initiative overview
2. Program updates
3. Questions



The challenge

- Flooding does not follow political boundaries, as major watersheds cross parish and state lines.
- Actions in one community can impact entire ecosystems.



The opportunity

- Fundamentally change the state's approach to flood risk reduction
- Proactively address flood risk through improved, watershed-based floodplain management



CHENIERE LAKE PARK, WEST MONROE



\$1.2 BILLION CDBG-MIT ACTION PLAN



Funding focus areas

FLOOD RISK REDUCTION PROJECTS

- Enhanced retention, drainage and protection
- Moving people and property out of harm's way

WATERSHED MODELING

- High-quality gauge network
- Watershed models and maps
- User-friendly data portal

REGIONAL COORDINATION

- Regional watershed management
- Improved building and land use practices to reduce flood risk



LOCAL AND REGIONAL PROJECTS AND PROGRAMS



Round 1

LOCAL AND REGIONAL PROJECTS

\$100 million funding opportunity for projects submitted by local and regional public entities

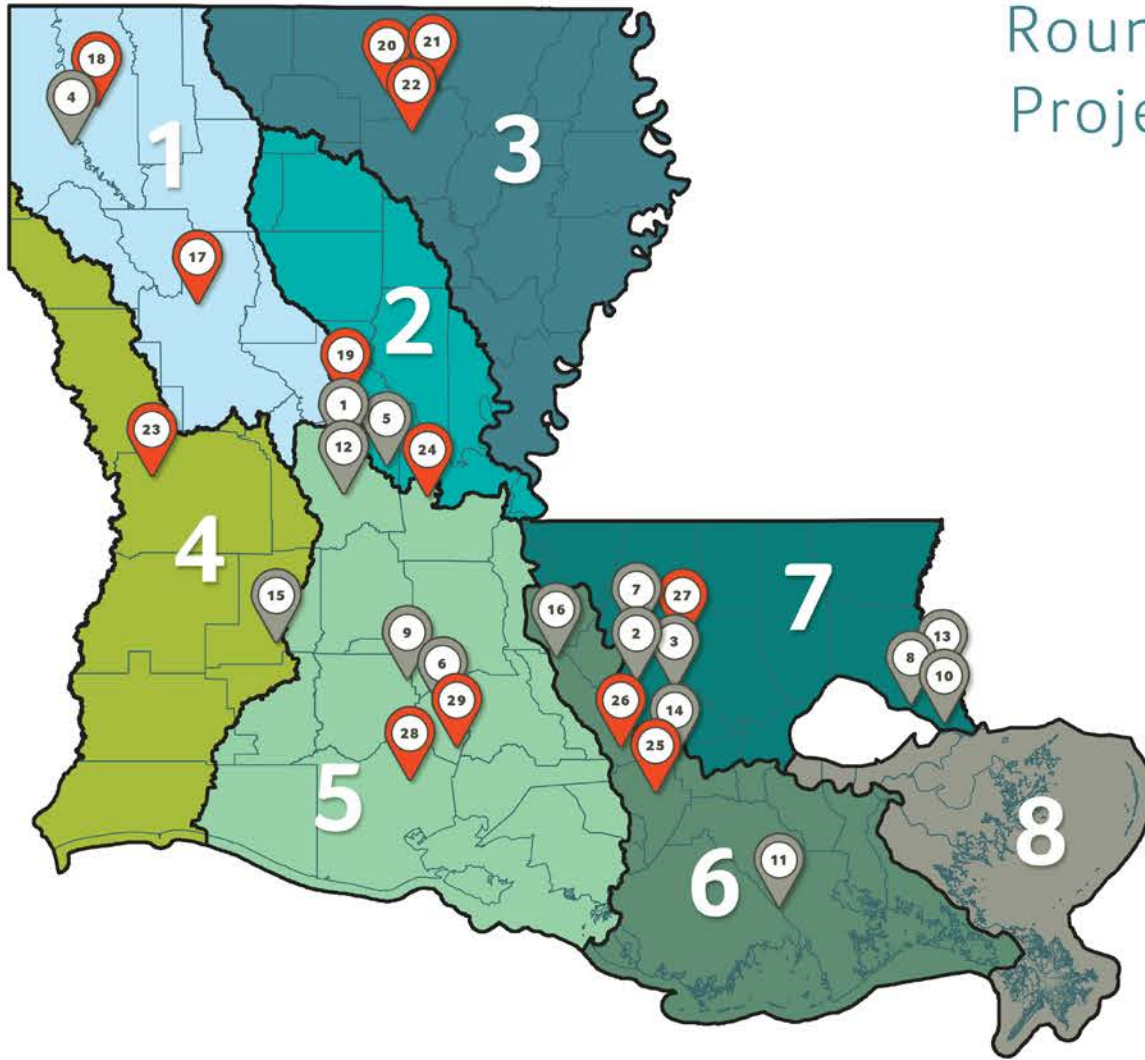
- \$61.6 million distributed via state scoring process
- \$34 million distributed via regional recommendations

Program focuses on implementation-ready, low-risk projects that address flood risk through a watershed-based approach.



FLOOD MITIGATION PROJECT, CHALMETTE





Round 1 Projects

STATE PROJECTS

- 1 CHATLIN LAKE CANAL BACKWATER OVERFLOW RELIEF STRUCTURE
- 2 BAYOU DUPLANTIER FLOODPLAIN ACQUISITION
- 3 WARD CREEK FLOODPLAIN ACQUISITION
- 4 OCKLEY BASIN STORAGE PROJECT
- 5 HUFFMAN CREEK PUMP STATION AND OUTFALL IMPROVEMENTS
- 6 COULEE MINE EAST DETENTION PROJECT
- 7 CYPRESS BAYOU GREEN INFRASTRUCTURE
- 8 DELLWOOD DRAINAGE PUMP STATION HARDENING
- 9 CHURCH POINT DETENTION AND FLOOD PROOFING
- 10 EAST SLIDELL RING LEVEE
- 11 EMERGENCY BACKUP PUMPS FOR PUMP STATIONS
- 12 HORSESHOE CANAL HARDENING PROJECT
- 13 LEE STREET DRAINAGE PUMP STATION HARDENING
- 14 BONADONA-CATALDO SUBDIVISION DRAINAGE PUMP IMPROVEMENTS
- 15 COUSHATTA CASINO RESORT WASTEWATER TREATMENT PLANT FLOODWALL
- 16 TOWN OF MARINGOUIN DRAINAGE IMPROVEMENTS

REGIONAL RECOMMENDED PROJECTS

- 17 EAST NATCHITOCHES DRAINAGE IMPROVEMENTS
- 18 FOXSKIN BAYOU DRAINAGE IMPROVEMENTS
- 19 DRAINAGE CROSSING REPLACEMENTS
- 20 PORTABLE PUMPS PARISHWIDE
- 21 YOUNGS BAYOU DETENTION POND
- 22 GEORGIA STREET PUMP STATION
- 23 REPLACEMENT OF BALL PARK LIFT STATION
- 24 BAYOU LACOMBE CHANNEL IMPROVEMENTS
- 25 BAYOU LAFOURCHE PUMP PROJECT
- 26 WHITE CASTLE CANAL DRAINAGE IMPROVEMENT PROJECT
- 27 JONES CREEK DETENTION PROJECT
- 28 ABBEVILLE AREA VERMILION RIVER BRIDGE DEBRIS BARRIER SYSTEM
- 29 CYPRESS BAYOU AND COULEE LASALLE DRAINAGE IMPROVEMENTS



Design Support Pilot Program

LOCAL AND REGIONAL PROJECTS

- \$100 million technical assistance program for projects that did not score high enough to receive funding in Round 1
- Priorities:
 - Support projects in HUD most impacted and distressed parishes and low- to moderate-income areas
 - Incorporate nature-based solutions
 - Enhance statewide dispersion of project funds
- Expected to launch in early 2021



TOLEDO BEND



STATE PROJECTS AND PROGRAMS



Overview

STATE PROJECTS AND PROGRAMS

\$213 million for 20 projects selected by state agencies

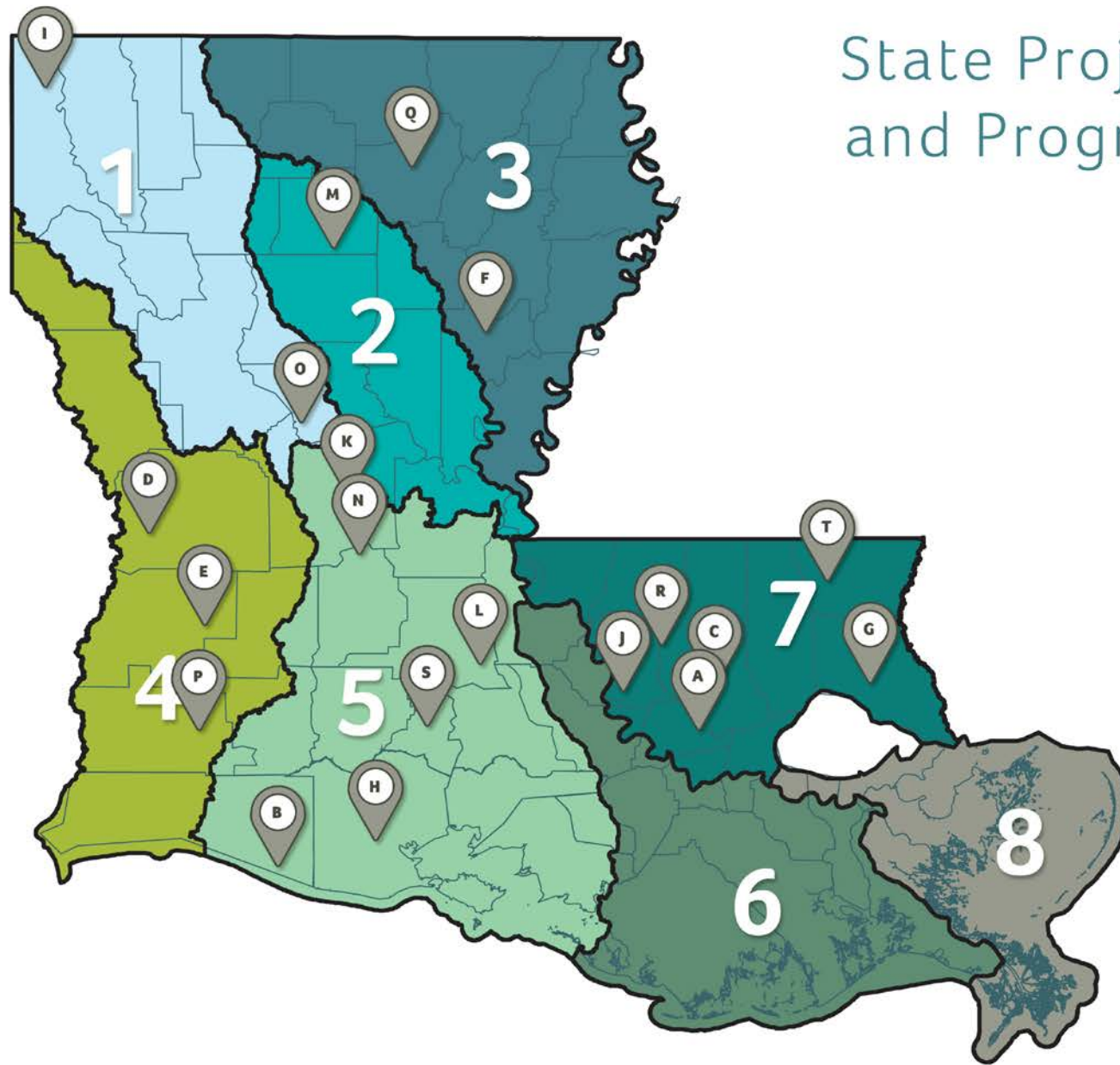
- The projects align with LWI's long-term resilience objectives. They will reduce flood risk in communities throughout the state, store floodwaters in ways that enhance natural habitats and move people in flood-prone areas out of harm's way.



RED RIVER, ALEXANDRIA



State Projects and Programs



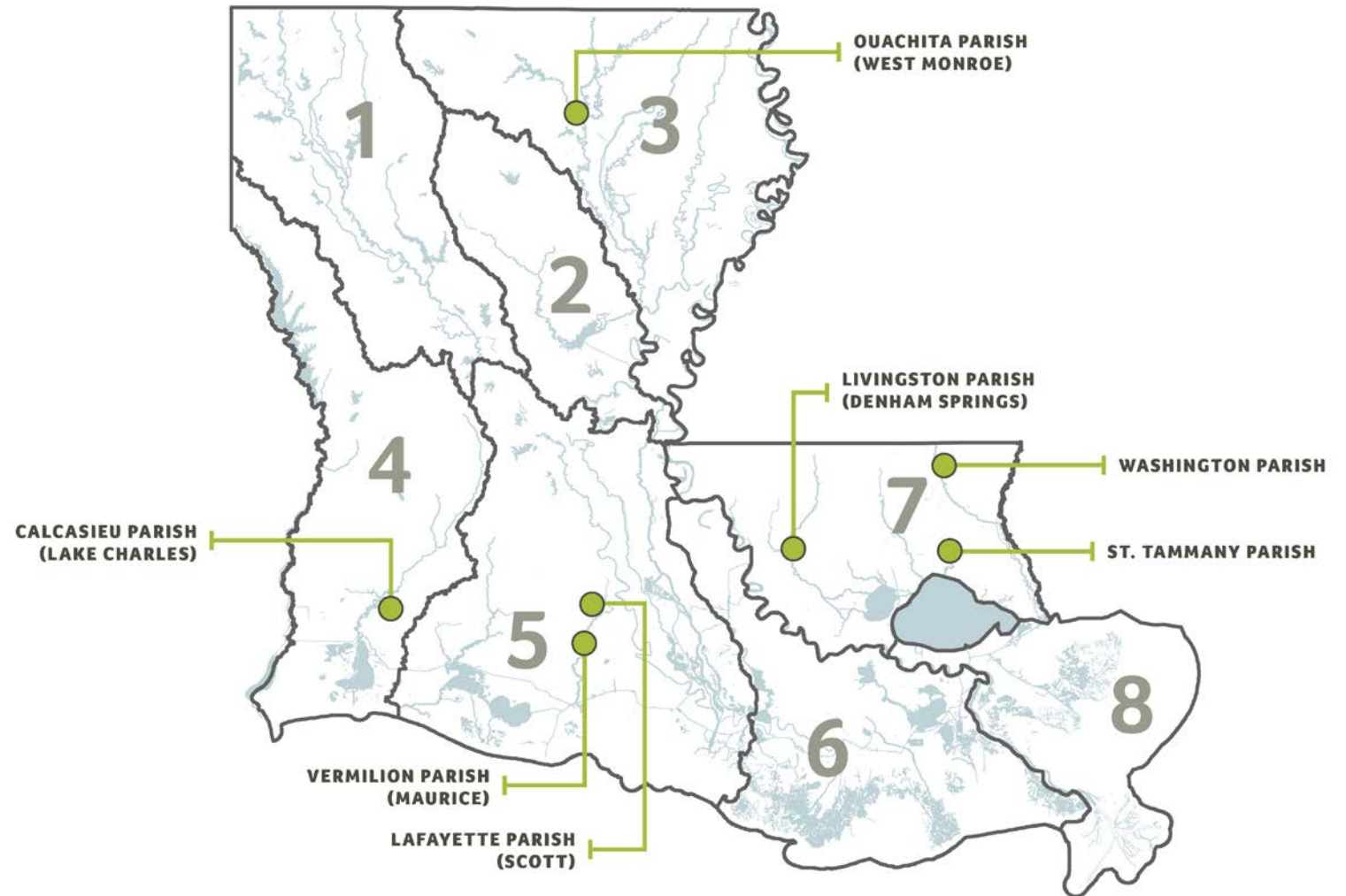
- (A) LA. HWY. 22 BRIDGE CONSTRUCTION AND DRAINAGE IMPROVEMENTS
- (B) MERMENAU BASIN INUNDATION RELIEF PROJECT
- (C) LIVINGSTON PARISH DRAINAGE IMPROVEMENTS
- (D) ANACOCO CREEK WATERSHED IMPROVEMENTS
- (E) BUNDICK LAKE FLOOD SURCHARGE MANAGEMENT
- (F) TURKEY CREEK RETENTION IMPROVEMENTS AND CRITICAL INFRASTRUCTURE HARDENING
- (G) ST. TAMMANY PARISH RESIDENTIAL BUYOUTS, ELEVATIONS OR RECONSTRUCTIONS
- (H) VERMILION PARISH RESIDENTIAL BUYOUTS, ELEVATIONS OR RECONSTRUCTIONS
- (I) BLACK BAYOU STRUCTURE HARDENING AND RUNOFF RETENTION IMPROVEMENTS
- (J) UNIVERSITY LAKES FLOOD RISK REDUCTION PROJECT
- (K) LSU ALEXANDRIA DRAINAGE IMPROVEMENTS
- (L) THREE MILE LAKE BACKWATER FLOOD REDUCTION
- (M) CANEY LAKE FLOOD SURCHARGE MANAGEMENT
- (N) BAYOU COCODRIE RUNOFF RETENTION AND CRITICAL INFRASTRUCTURE IMPROVEMENTS
- (O) IATT LAKE DRAWDOWN IMPROVEMENTS
- (P) LAKE CHARLES VOLUNTARY RESIDENTIAL BUYOUT PROGRAM
- (Q) WEST MONROE VOLUNTARY RESIDENTIAL BUYOUT PROGRAM
- (R) DENHAM SPRINGS VOLUNTARY RESIDENTIAL BUYOUT PROGRAM
- (S) SCOTT VOLUNTARY RESIDENTIAL BUYOUT PROGRAM
- (T) WASHINGTON PARISH VOLUNTARY RESIDENTIAL BUYOUT PROGRAM



Statewide Buyout Program

\$87 million for seven buyout areas

- Offers voluntary property buyouts in flood-prone areas, as well as an incentive—payment above fair market value—to those who relocate properties to areas of lower flood risk

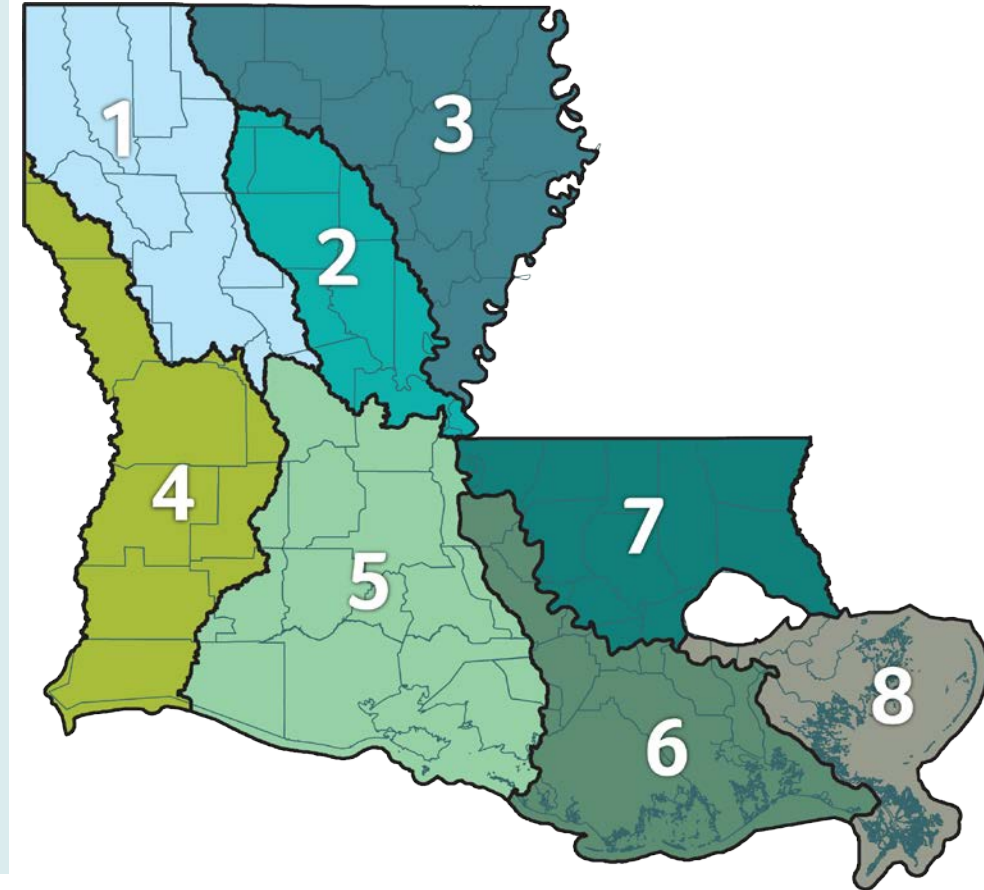


REGIONAL CAPACITY BUILDING GRANT PROGRAM



RCBG program overview

- Three-year grant program to help the state's eight provisional watershed regions build staff capacity for regional watershed management
- Primary goal: Establish a long-term entity—or watershed coalition—in each region, responsible for regional watershed management



RCBG program phases

PHASE 1: \$400,000 GRANTS PER WATERSHED REGION

- Supports initial efforts to build staff capacity and regional coordination, as regions form temporary steering committees to develop work plans and make recommendations for long-term watershed coalitions

PHASE 2: \$800,000 GRANTS PER WATERSHED REGION

- Supports continued regional watershed-based floodplain management, as regions implement long-term watershed coalitions, develop flood risk reduction strategies and resilience standards and coordinate project funds to advance steering committee recommendations



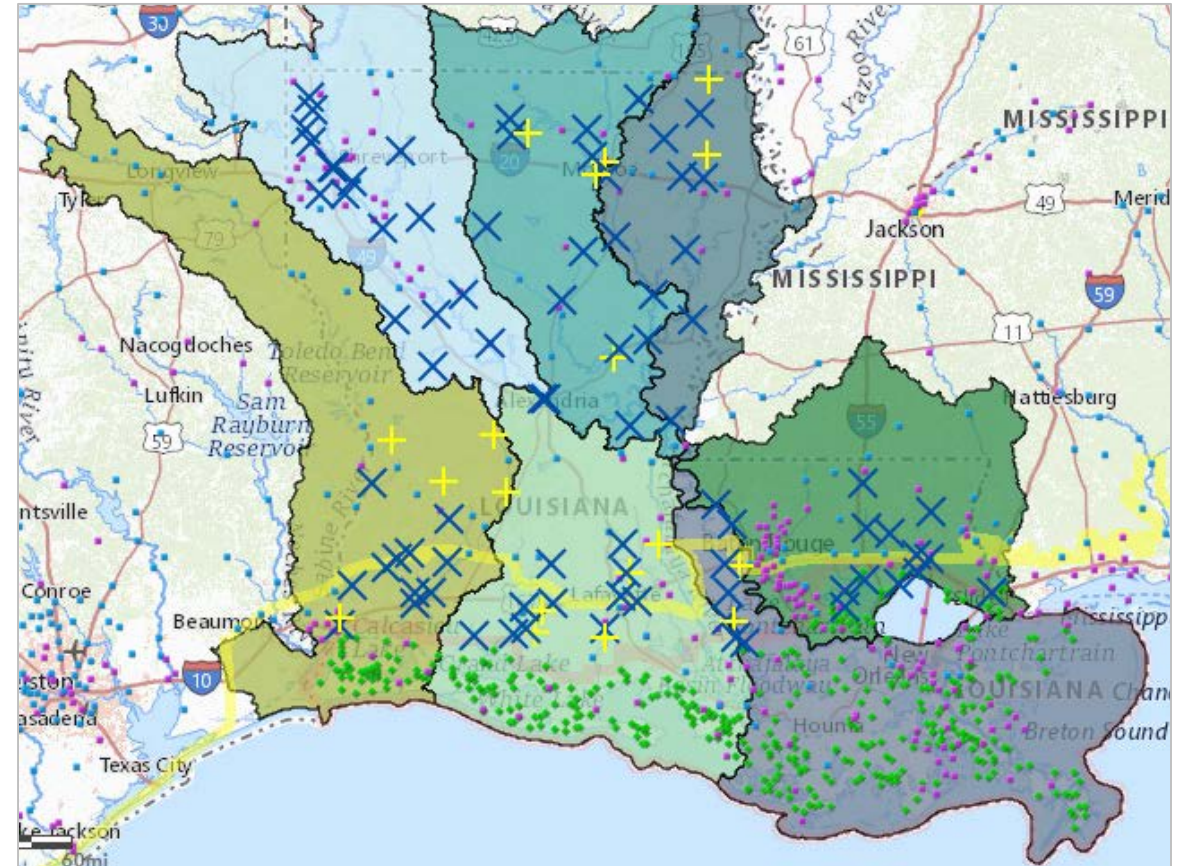
STATEWIDE DATA AND MODELING PROGRAM



River and rain gauge network

ENHANCEMENTS UNDERWAY

- \$15 million to install river and rain gauges at 100 sites throughout Louisiana over the next six years
- Gauges installed at 24 sites so far
- More details on the gauge network design and progress: watershed.la.gov/modeling-program.



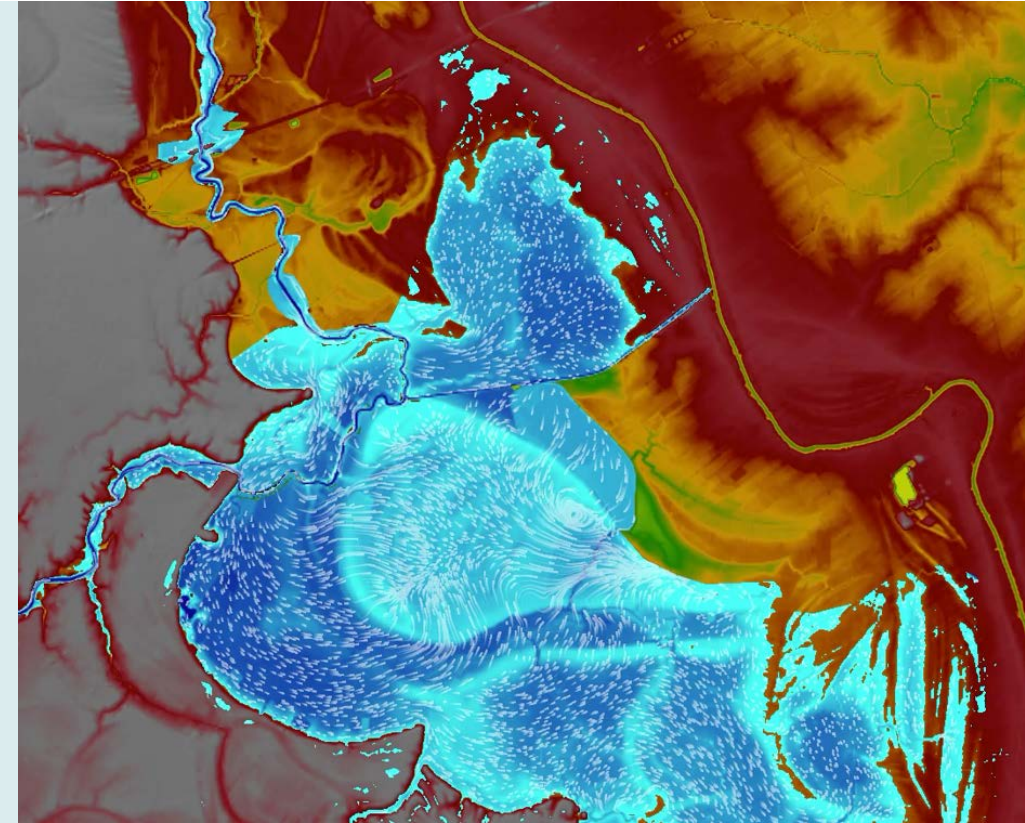
GAUGE NETWORK DESIGN (TOP 100 SITES)



Statewide modeling effort

OVERVIEW

- The state and its partners are developing models of Louisiana's major watersheds, which will simulate flood scenarios and analyze potential mitigation solutions.
- DOTD and OCD executed an agreement for the regional modeling effort in March 2021. Consultants will develop 47 HUC8 hydrologic and hydraulic regional models.
- Models are expected to be complete by 2023.



Model Use, Storage and Maintenance Plan

- The MUSM plan provides the framework for long-term management of watershed models, with recommendations on use, storage and maintenance.
- The state accepted public comments on the plan until Nov. 17.
- The final plan will incorporate public comments and be submitted to LWI working groups and the watershed council for review.



CHENIERE LAKE



NATURE-BASED SOLUTIONS PROGRAM



Working With Nature Training Series

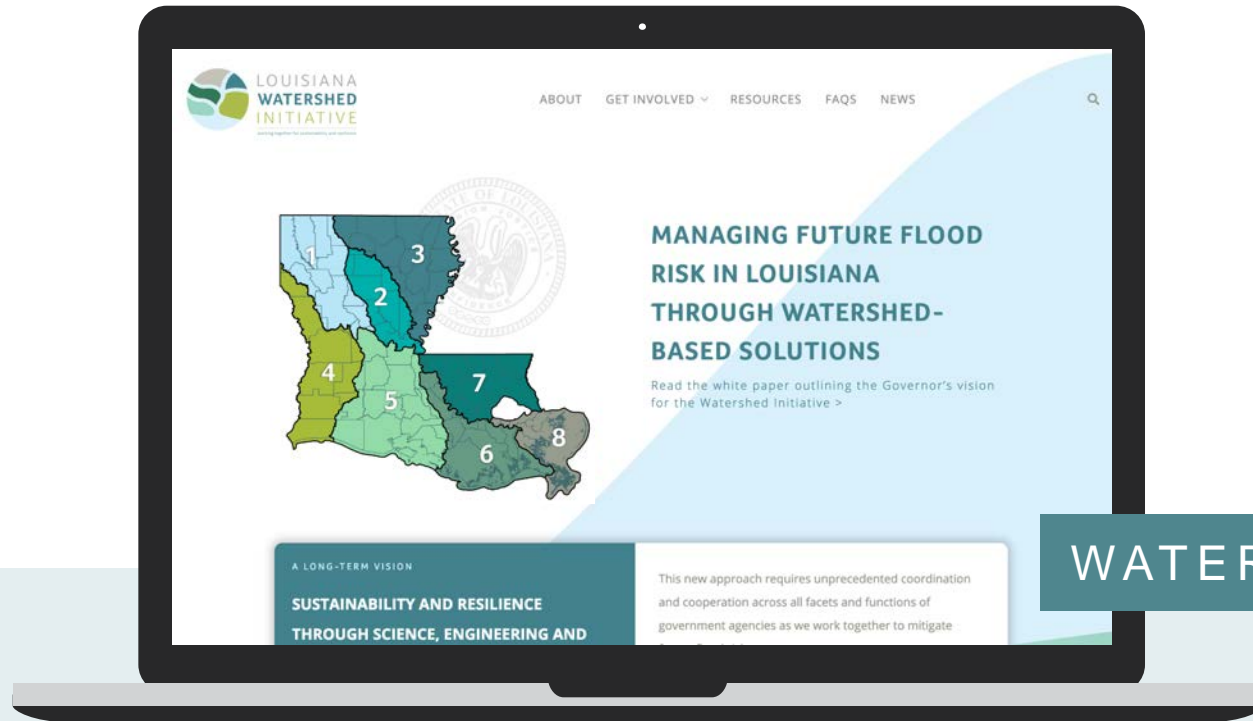
OVERVIEW

- A nine-part webinar series to train participants in the design and development of nature-based flood mitigation projects, which are a priority of LWI funding opportunities
- **Next webinar: 1 p.m. Dec. 15**
- More details: watershed.la.gov/nature-based-solutions



f @LAWATERSHEDINITIATIVE
t @LAWATERSHED
i @LAWATERSHED
in LOUISIANA WATERSHED INITIATIVE
 WATERSHED@LA.GOV

THANK YOU



WATERSHED.LA.GOV