

ASSOCIATION OF LEVEE BOARDS OF LOUISIANA

2017 U.S. ARMY CORPS OF ENGINEERS, NEW ORLEANS DISTRICT UPDATE

COL Michael Clancy
New Orleans District
U.S. Army Corps of Engineers
Dec. 7, 2017

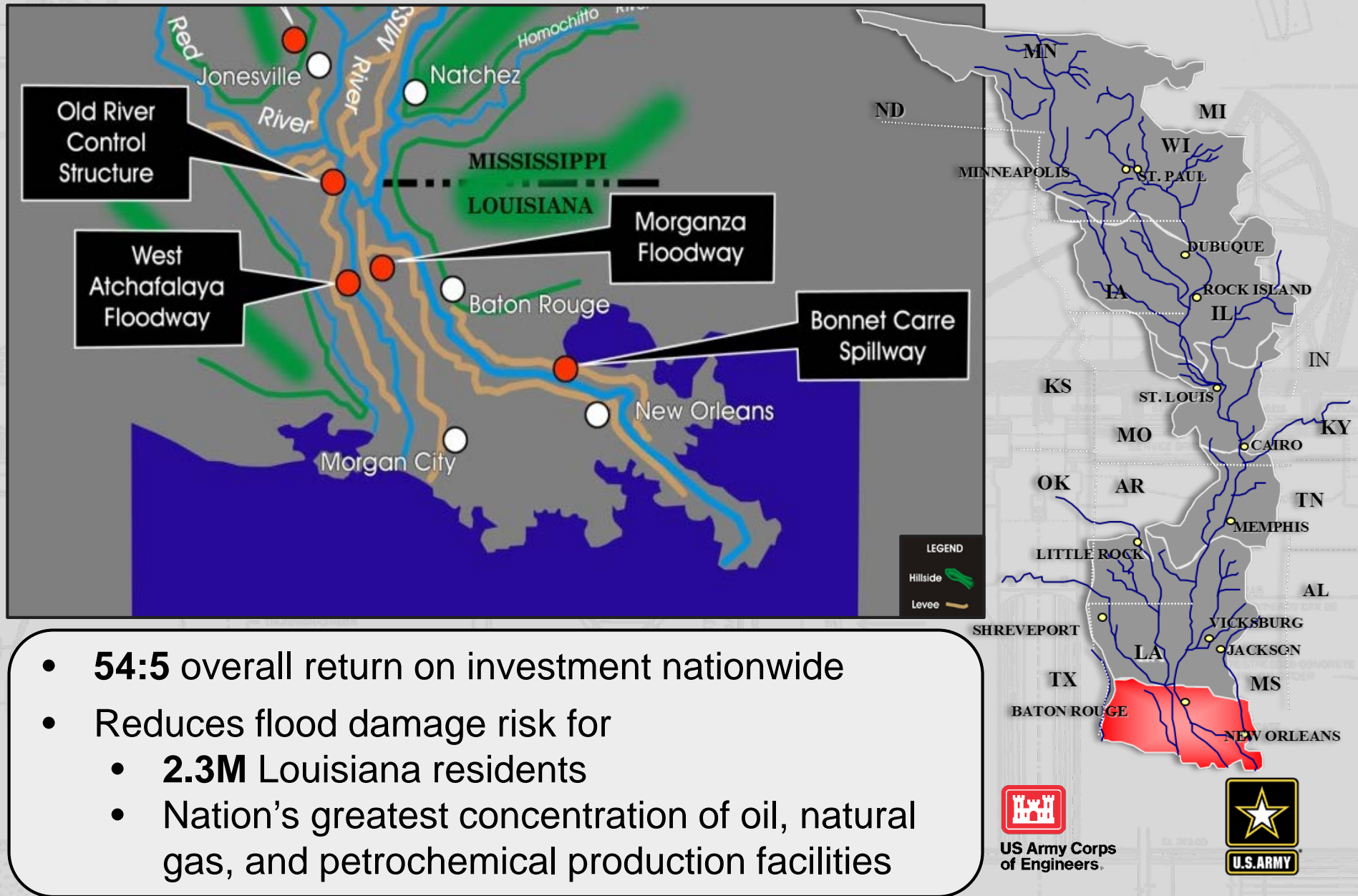
"The views, opinions and findings contained in this report are those of the authors(s) and should not be construed as an official Department of the Army position, policy or decision, unless so designated by other official documentation."



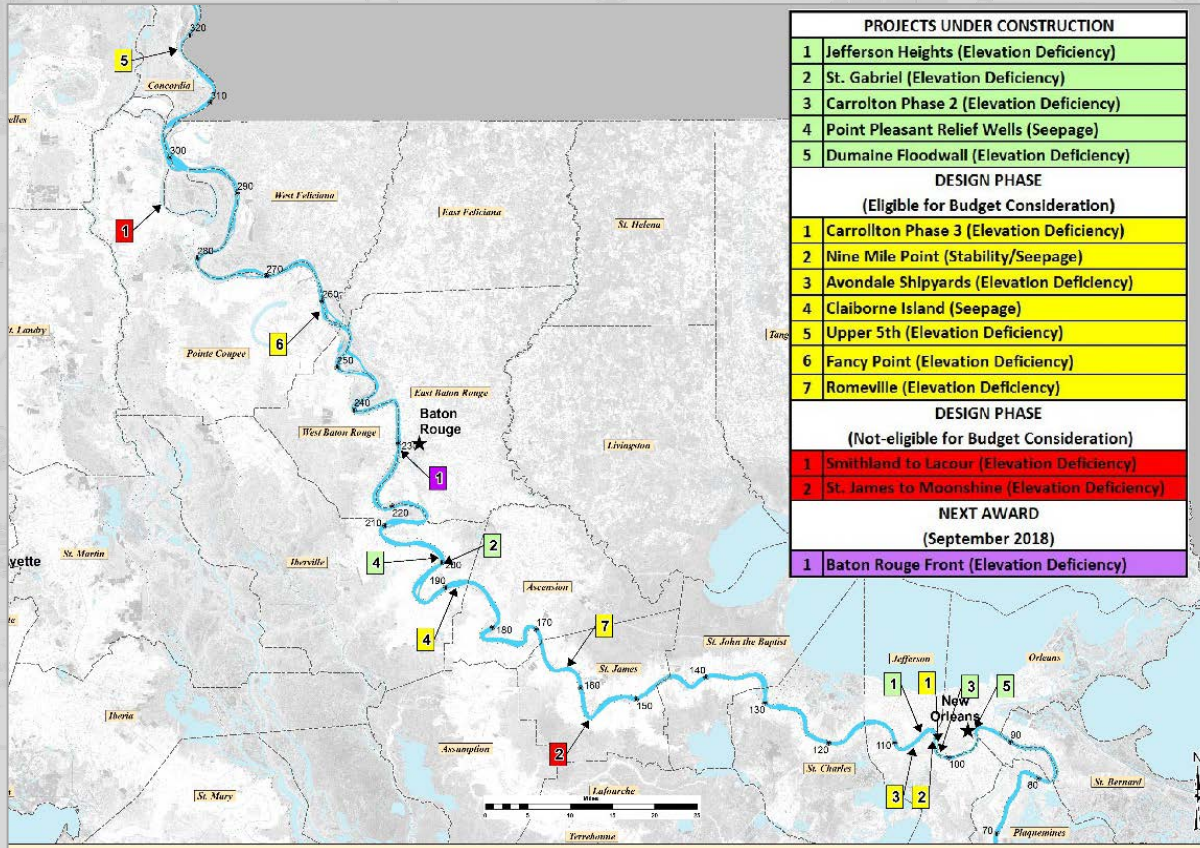
**US Army Corps
of Engineers®**



Mississippi River & Tributaries



Mississippi River Levees



Ongoing Construction

- Jefferson Heights Levee
- Carrollton Phase II Floodgate
- Dumaine Street Floodgate
- St. Gabriel Levee

- Point Pleasant Relief Wells

Upcoming FY18 Construction

- Baton Rouge Front Floodwall

- System is 68% complete with approx. \$1B in remaining work -

2016 Winter High Water



Successfully passed the project flood through City of New Orleans

- Bonnet Carré Spillway operated for **11th** time

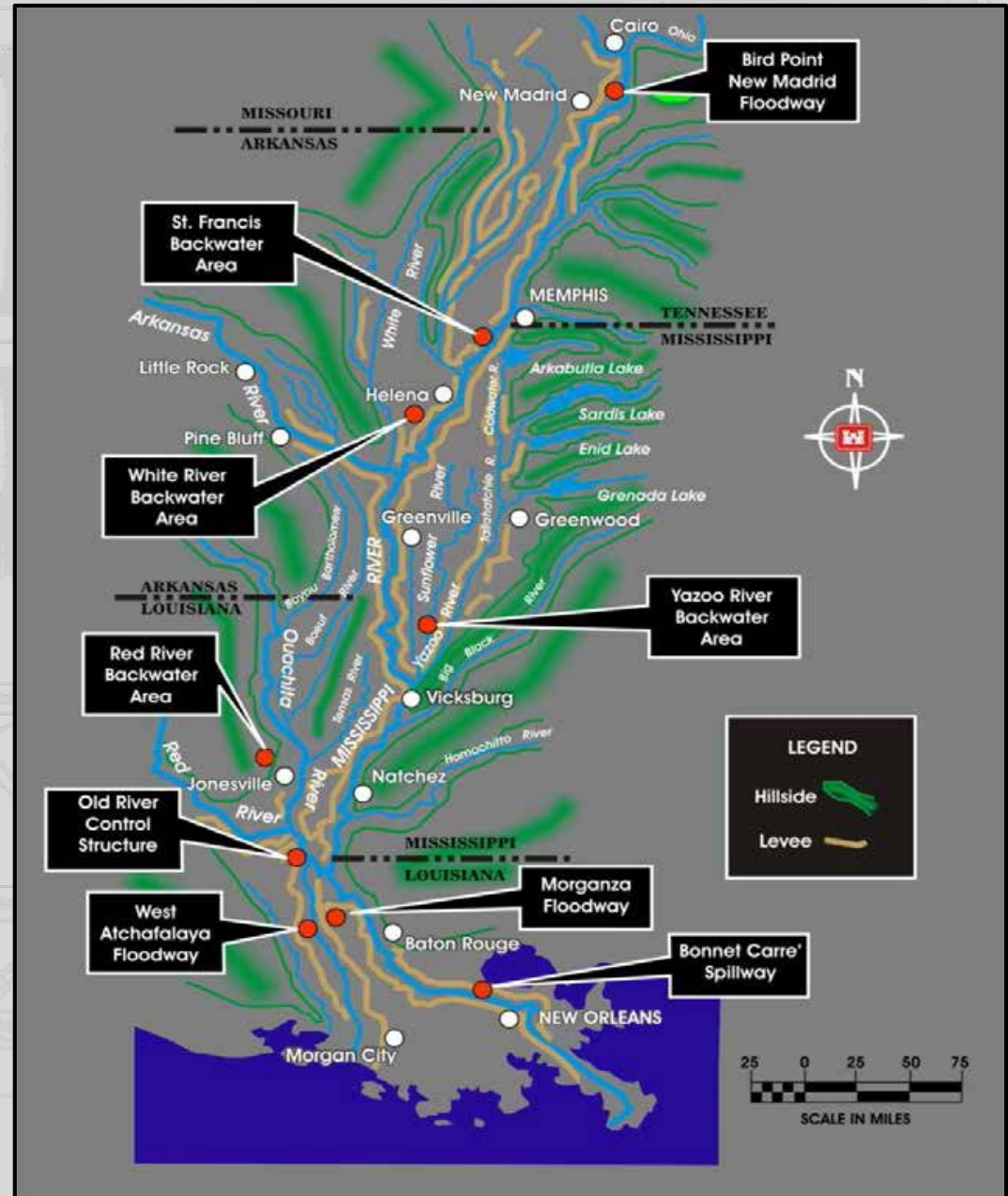
Post flood reset and restore work

- Completed **29** items @ **\$162.2M**
- **18** items @ **\$73.9M** underway

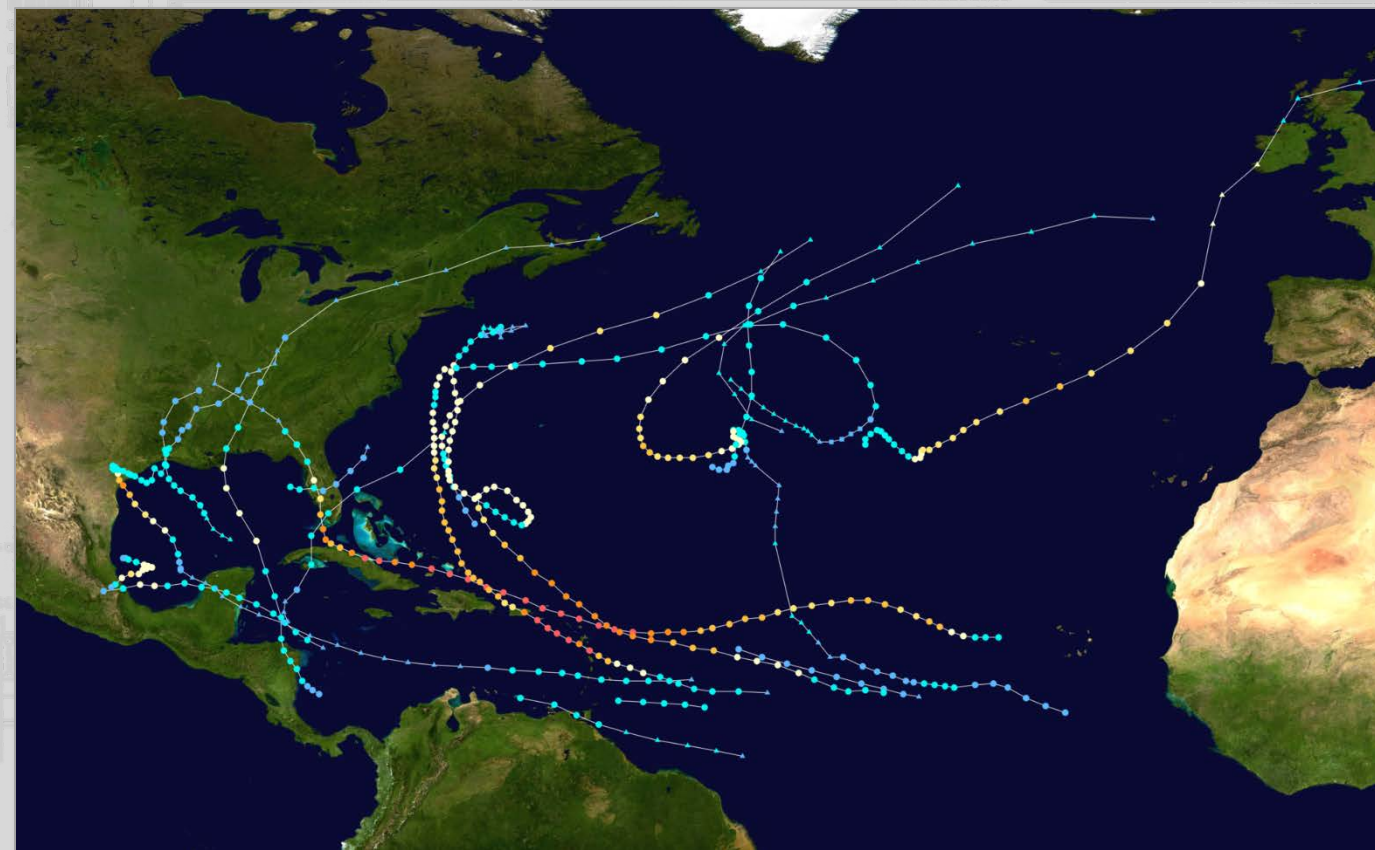


2017 Spring High Water

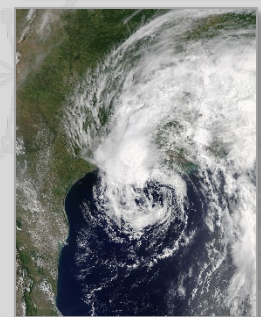
- Joint flood fight effort between USACE and levee districts from 4 May to 25 June
- Reached Phase II flood fight levels for second straight year (20 May to 13 June)
- River crested at 16.2 feet and 1.24M cfs (BCS operational trigger at 1.25M)
- Approx. \$24B in damages avoided in Louisiana



2017 Hurricane Season



- **\$370B** in damages as a result of **17** named storms
- **>850** USACE personnel engaged in Puerto Rico and U.S. Virgin Is.
- USACE has **49** FEMA mission assignments at **\$1.7B**
- Mission to remove **3.4M** cubic yards of debris from Puerto Rico



T.S.
Cindy



Hurricane
Harvey



Hurricane
Irma



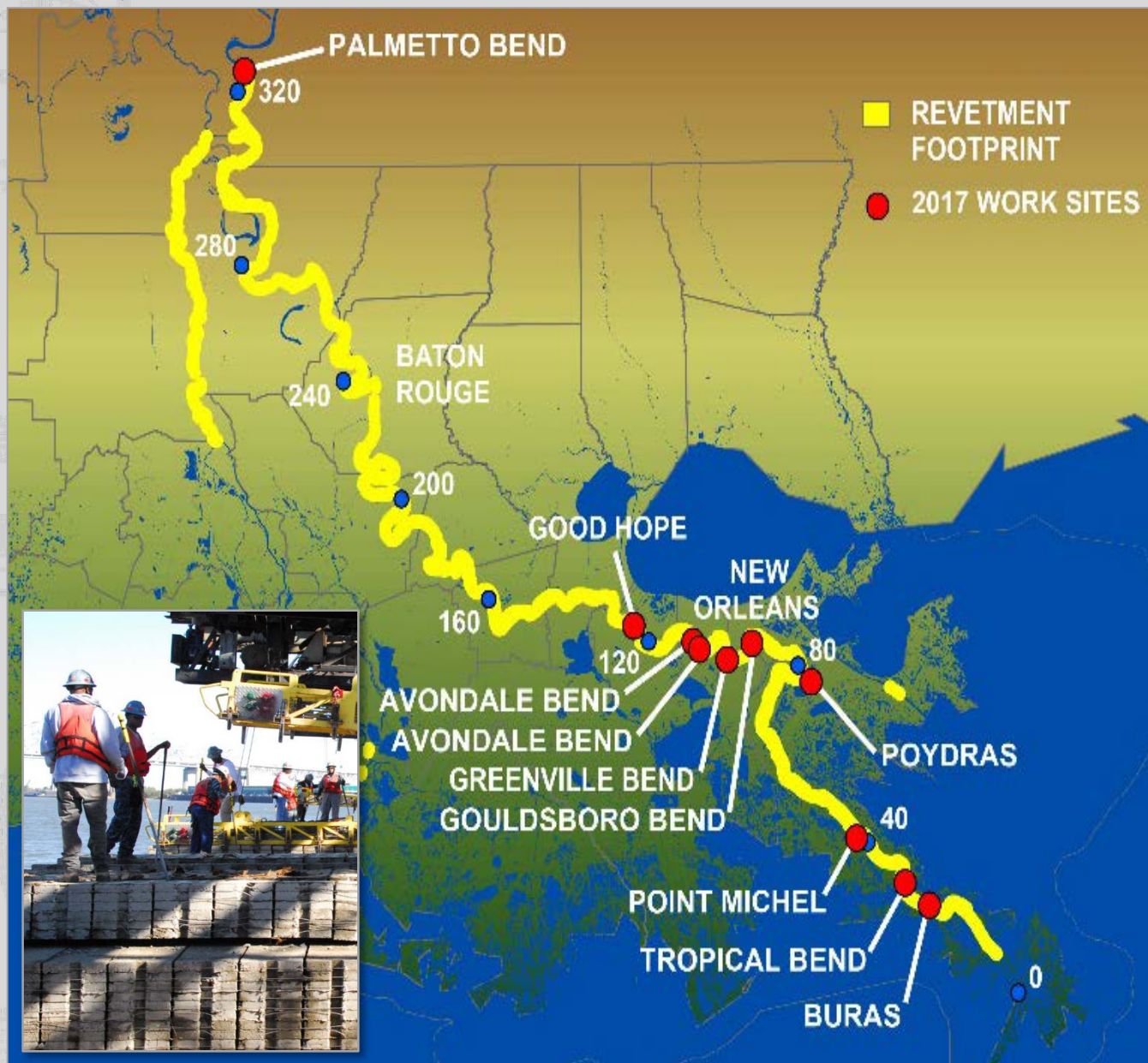
Hurricane
Maria



Hurricane
Nate

Navigation Channel Improvement

7



Stability berm Construction

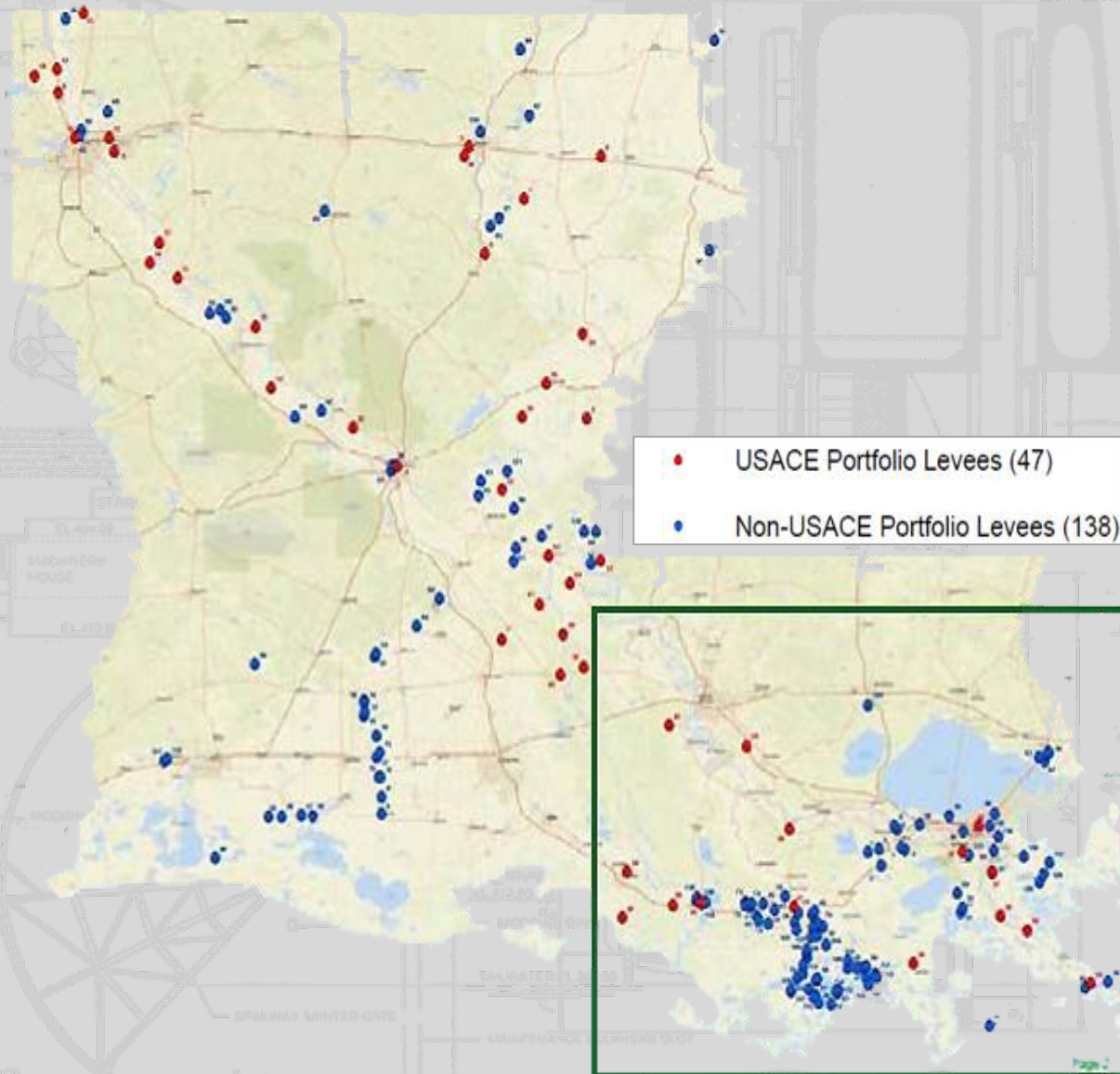
- Greenville
- Gouldsboro Bend
- Tropical Bend
- Point Michel
- Buras

Revetment work

- Palmetto
- Avondale(2 Sites)
- Greenville Bend
- Poydras
- Tropical Bend

*Overall, **75** areas within MVN AOR with bank and levee stability issues.*

National Levee Inventory & Review Initiative



- **11 of 25** system LSACs approved by USACEHQ
- Will meet with levee districts in early **2018** to discuss system summaries and LSAC ratings
- WRRDA '14 authorized a one-time inventory and risk assessment of any system included in the National Levee Database



US Army Corps
of Engineers.



Section 408 Permissions



- FY18 funding provided on a monthly basis
- Interim guidance reduces requests that require USACE HQ approval, reduces requirements for navigation servitudes
- Programmatic EA for Categorical Permissions to streamline process
- Collaborating with Tribal Nations and SHPO to limit number of request requiring their review (selected on a case-by-case basis)

HURRICANE AND STORM DAMAGE RISK REDUCTION SYSTEM REMAINING WORK

Permanent Canal Closures and Pumps



Miss. River / HSDRRS Co-located Levees



SELA Interior Drainage



Armoring



Environmental Mitigation

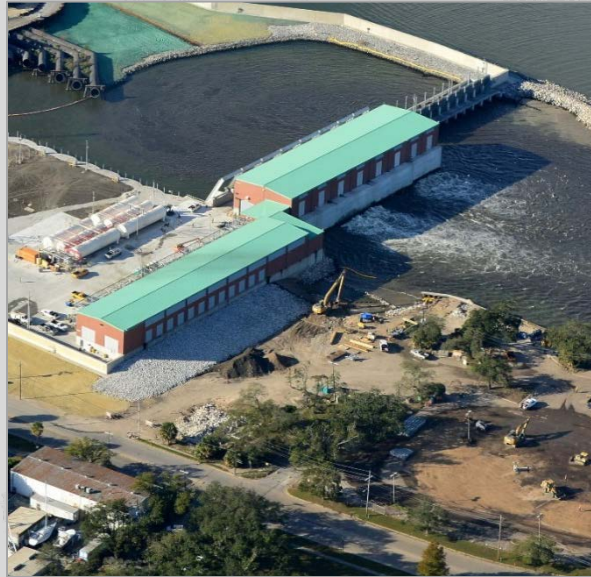


New Orleans to Venice / Non-Federal Levees

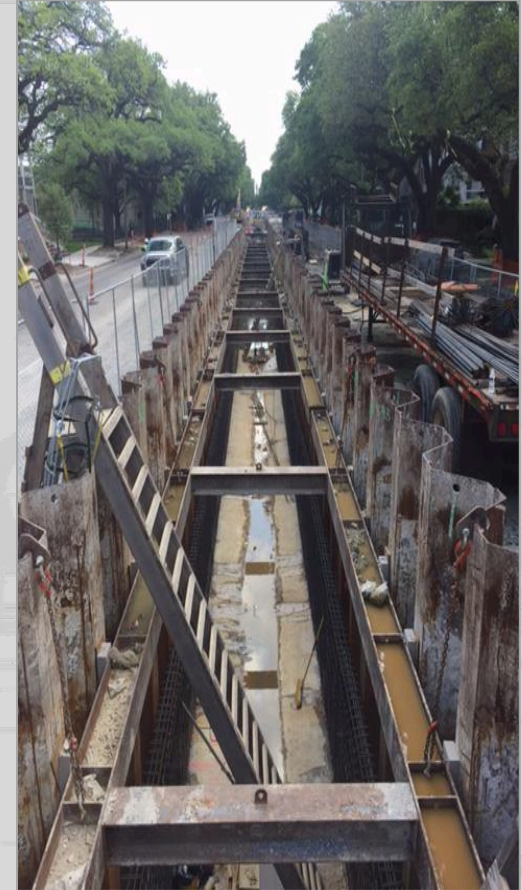
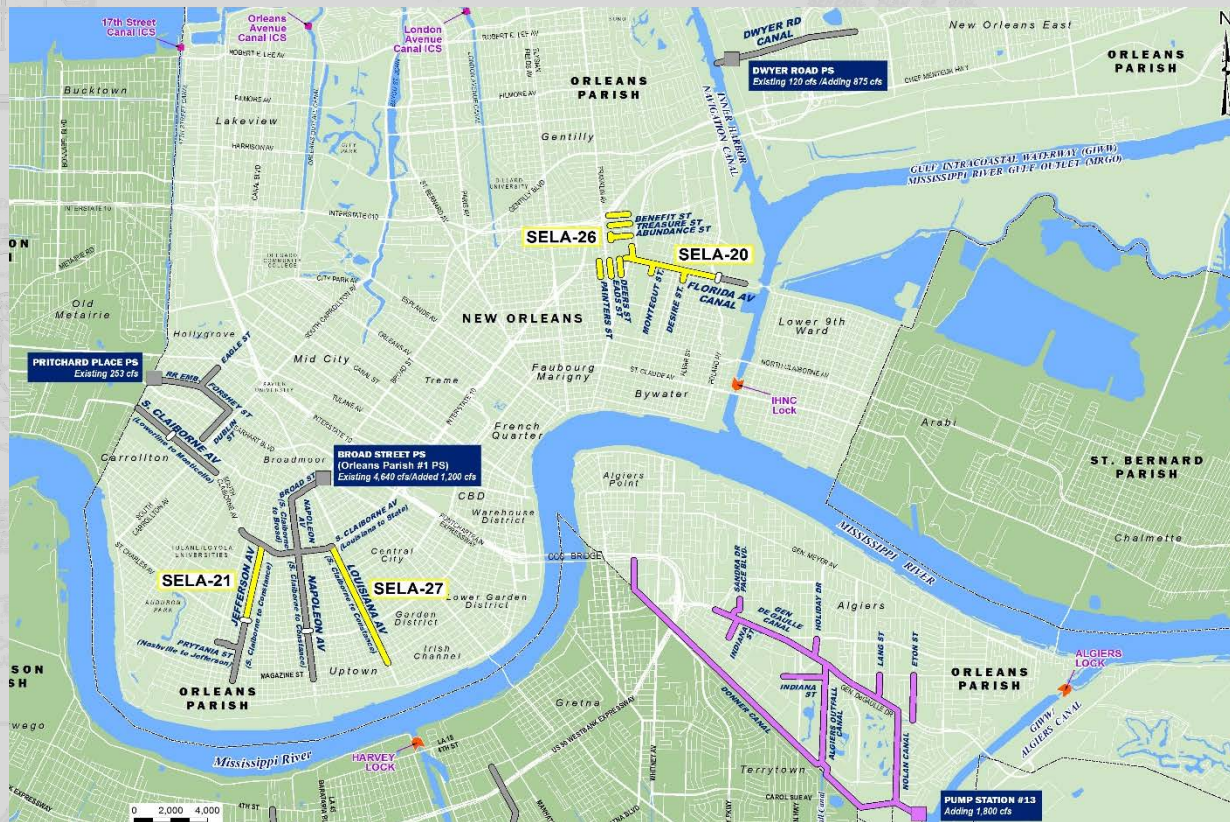


Permanent Canal Closures and Pumps

- Final major construction element of HSDRRS
- Construction **98%** complete
- Structures will be substantially complete in **Dec. 2017**
- Structures will provide 100-year level of surge risk reduction during **2018** Hurricane Season
- Operational training is a component of construction



SELA Urban Flood Control



- More than \$2B in internal drainage improvements completed or underway in Jefferson and Orleans parishes
- NCC'd Jefferson Parish's Pump to the River in Aug. 2017
- Operational projects performed as designed during Aug. 5 flood event

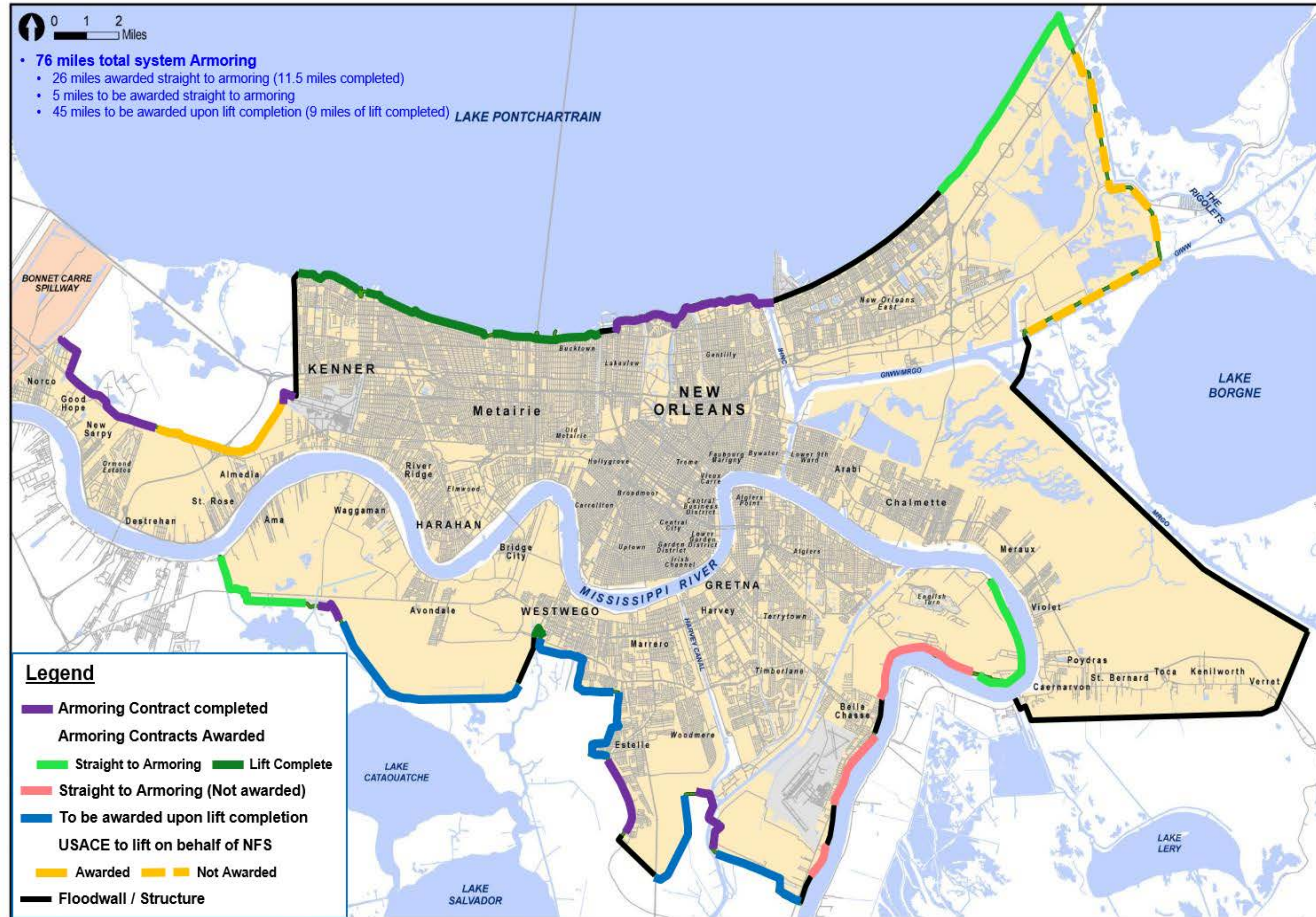
HSDRRS ARMORING STATUS

\$400M effort to increase levee resilience to storms greater than 100-year

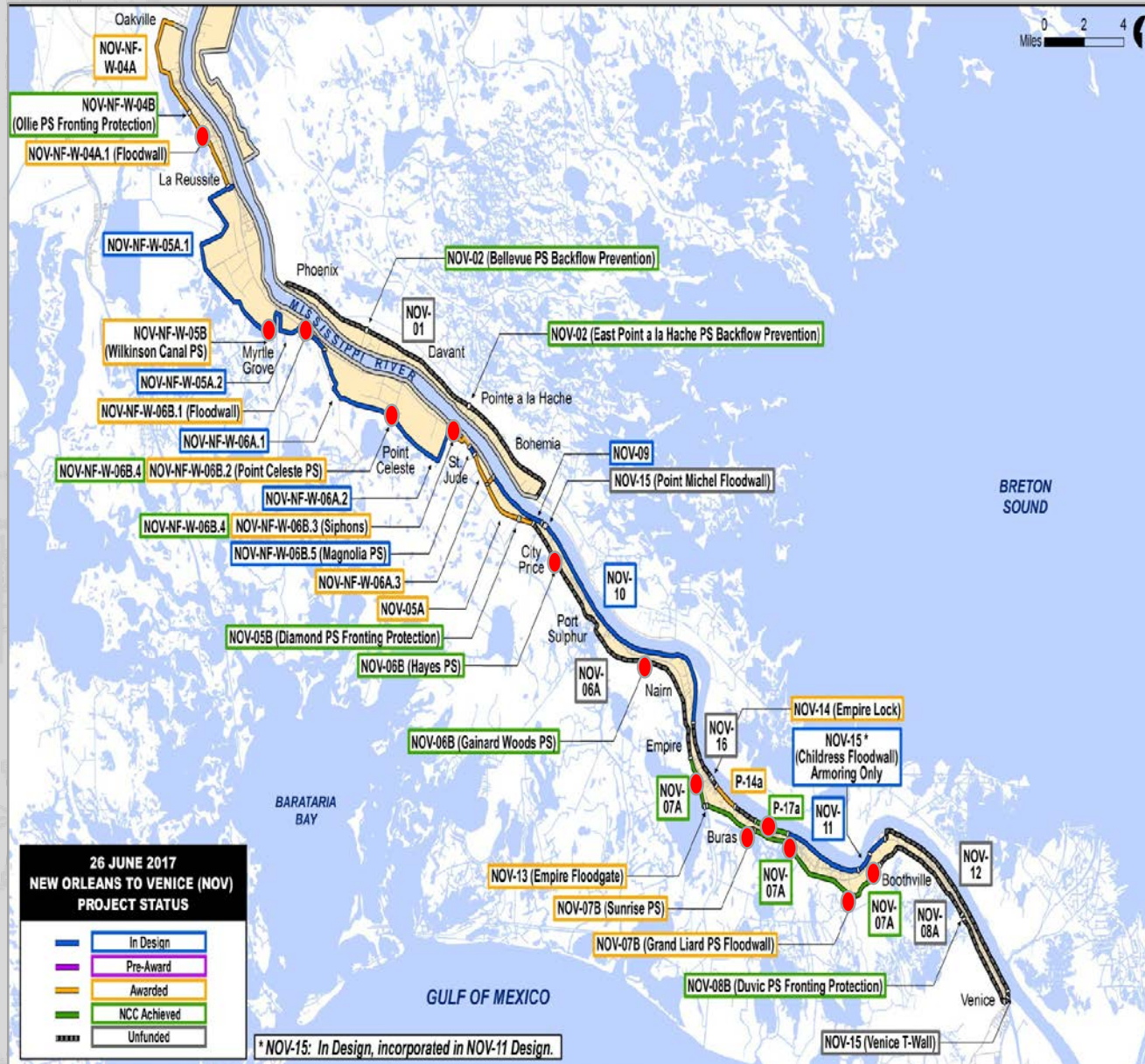
The importance of armoring is a critical lesson learned from Hurricane Katrina

76 total miles

- **26 miles** awarded with **11.5 miles** completed
- **45 miles** to be awarded follow levee lift completion (**9 miles** of lift completed)



NOV/NFL



NFL

- **\$671M**
- **34 miles of back levees, pump stations and floodwalls**
- **2 new pump stations**
- **2 pump station fronting protection**

NOV

- **\$763M**
- **37 miles of levees and floodwalls (west bank back levees and MRL)**
- **4 pump station fronting protection**
- **4 backflow prevention**
- **2 floodgates**

Comite River Diversion



- **\$6.7M** received in **FY17 USACE Work Plan**
- Combination of Work Plan funding and Non-Federal funds totaling **\$32M** will be used to advance construction of Hwy 61
- Coordinating with state and local partners to amend existing Project Cooperation Agreement



State of Louisiana Act 199

2017 Regular Session

HOUSE BILL NO. 144

BY REPRESENTATIVE ZERINGUE

ENROLLED

ACT No. 199

AN ACT

To amend and reenact R.S. 49:214.5.5, relative to integrated coastal restoration projects; to provide relative to immovable property interests that can be acquired by public entities for integrated coastal protection purposes; to provide for a term of acquisition of certain immovable property interests for integrated coastal protection; and to provide for related matters.

Be it enacted by the Legislature of Louisiana:

Section 1. R.S. 49:214.5.5 is hereby amended and reenacted to read as follows:

§214.5.5. Private property and public rights

A. Recognizing that a substantial majority of the coastal lands in Louisiana are privately owned, it is anticipated that a significant portion of the integrated coastal protection projects funded through the Coastal Protection and Restoration Fund either will occur on or in some manner affect private property.

B. No rights whatsoever shall be created in the public, whether such rights be in the nature of ownership, servitude, or use, with respect to any private lands or waters utilized, enhanced, created, or otherwise affected by activities of any governmental agency, local, state, or federal, or any person contracting with same for the performance of any activities, funded in whole or in part, by expenditures from the Coastal Protection and Restoration Fund or expenditures of federal funds. In the event legal proceedings are instituted by any person seeking recognition of a right of ownership, servitude, or use in or over private property solely on the basis of the expenditure of funds from the Coastal Protection and Restoration Fund, the

- Clean Water Act requires seeking the longest servitude possible in accordance with state regulations
- Changes mitigation servitudes from perpetual to fixed term
- Applies to integrated coastal protection projects
- Currently under review by USACE HQ
- Potential positions include
 - Servitude until project deauthorization
 - Servitude equal to or greater than the length of time project impacts are experienced

Discussion



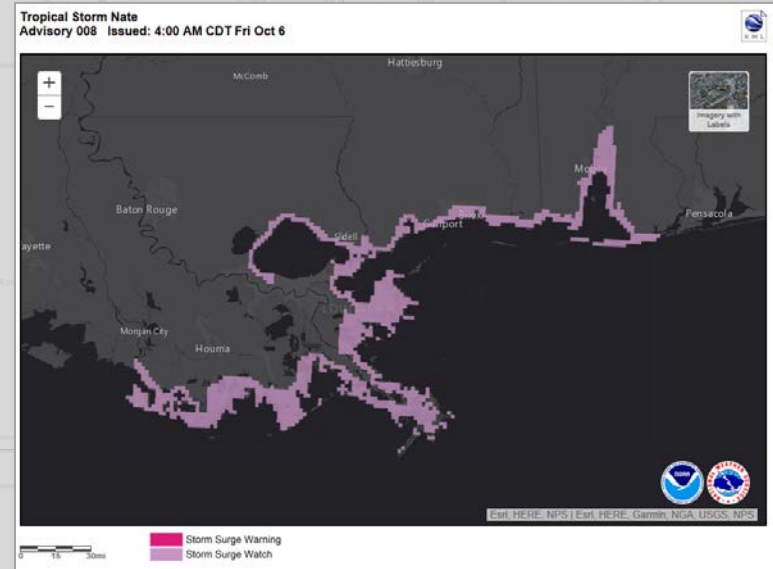
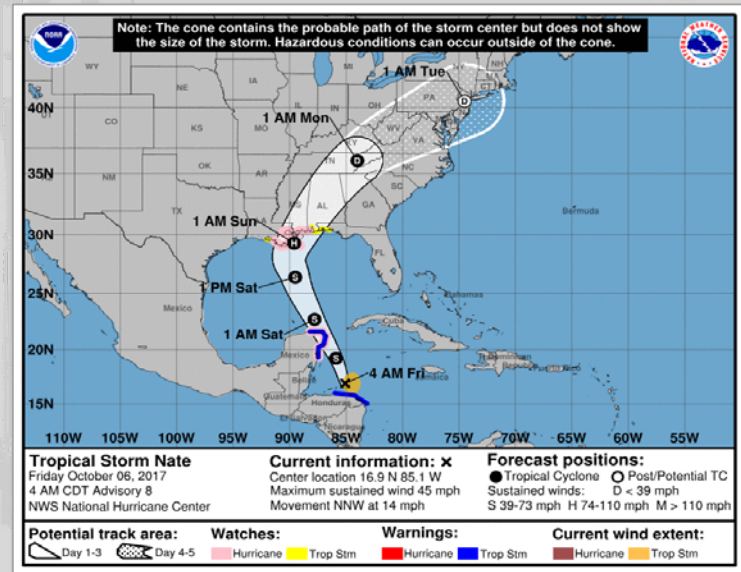
US Army Corps
of Engineers.



2017 Hurricane Nate

06 – 08 October 2017

- Local sponsors controlled and operated major structures
- 56 personnel remained onsite with 118 total employees engaged
- LGLs activated: Jefferson, Orleans, Plaquemines, St. Charles, St. John, Terrebonne, SLFPA-East and West, GOHSEP.



2017 Hurricanes Harvey, Irma, Maria

- Continue to support SWD and SAD as necessary for recovery efforts
- MVN Debris Team deployed to Puerto Rico
- MVN Employees currently deployed
Total: 42



US Army Corps
of Engineers.

