

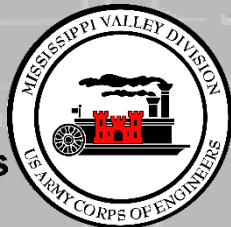
ASSOCIATION OF LEVEE BOARDS OF LOUISIANA

**MG Diana Holland
Commanding General
Mississippi Valley Division**

NOVEMBER 30th, 2022

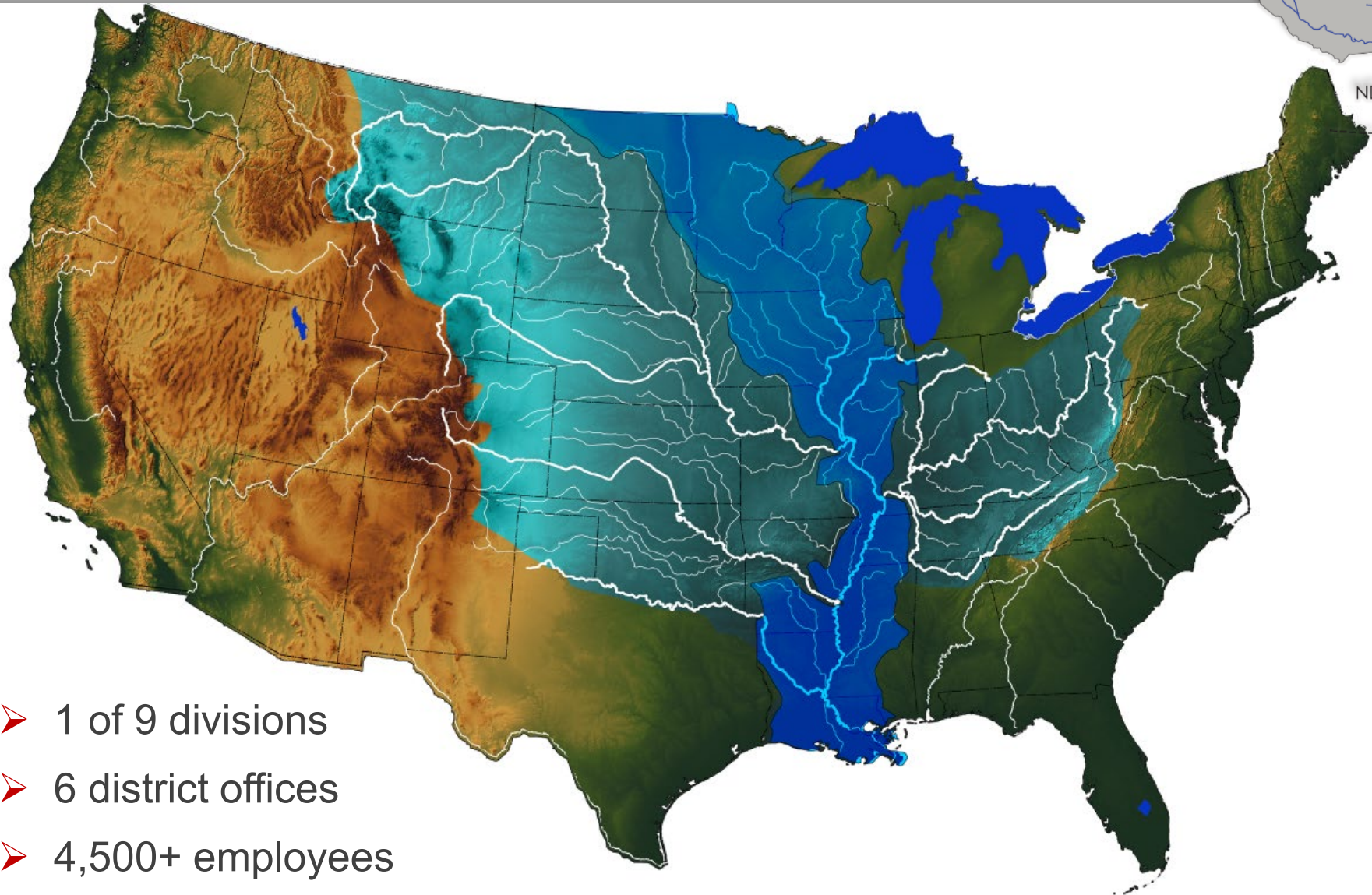


**US Army Corps
of Engineers®**

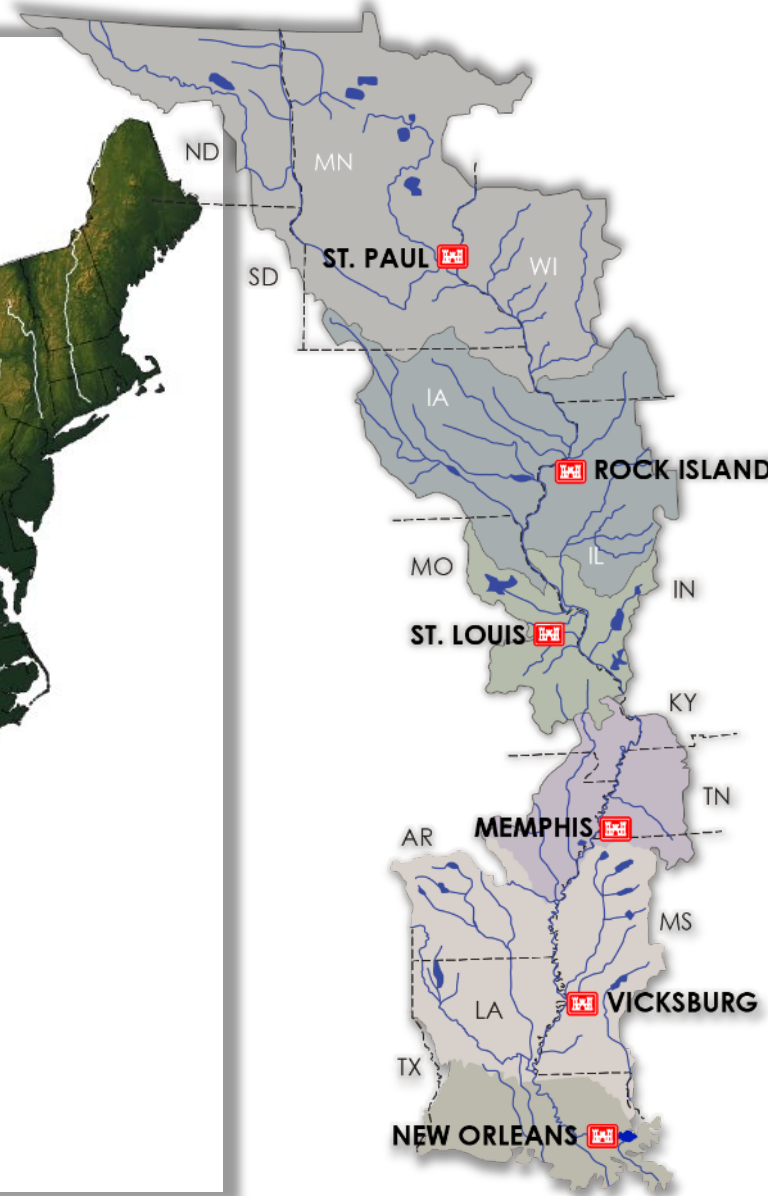




MISSISSIPPI VALLEY DIVISION



- 1 of 9 divisions
- 6 district offices
- 4,500+ employees





Mississippi Valley Division and Mississippi River Commission



MG Diana Holland
Commanding General, MVD
President, MRC



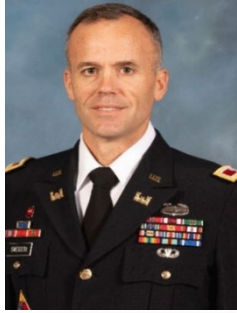
Hon. James Reeder
Civilian
2018



Hon. Riley James
Civilian
2020



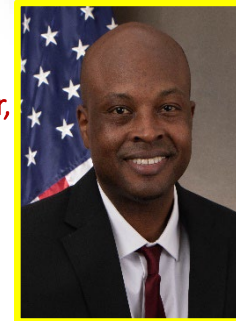
ST. PAUL
COL Eric Swenson



ROCK ISLAND
COL Jesse Curry



Hon. Robert Miller,
Ph. D.
Civilian
2022



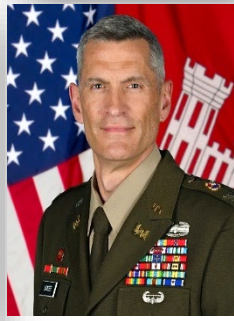
Rear Adm. Ben Evans
NOAA



ST. LOUIS
COL Kevin Golinghorst



MEMPHIS
COL Brian Sawser



COL Andy Pannier
Deputy Commander, MVD
Secretary, MRC



Brig Gen. Kimberly Peeples
Great Lakes &
Ohio River Division



Brig Gen. Geoff Van Epps
Northwestern
Division



VICKSBURG
COL Christopher Klein



NEW ORLEANS
COL Cullen Jones



MVD
Mr. Donny Davidson
Acting Director
Regional Programs



MVD
Mr. Jim Bodron
Director of
Programs



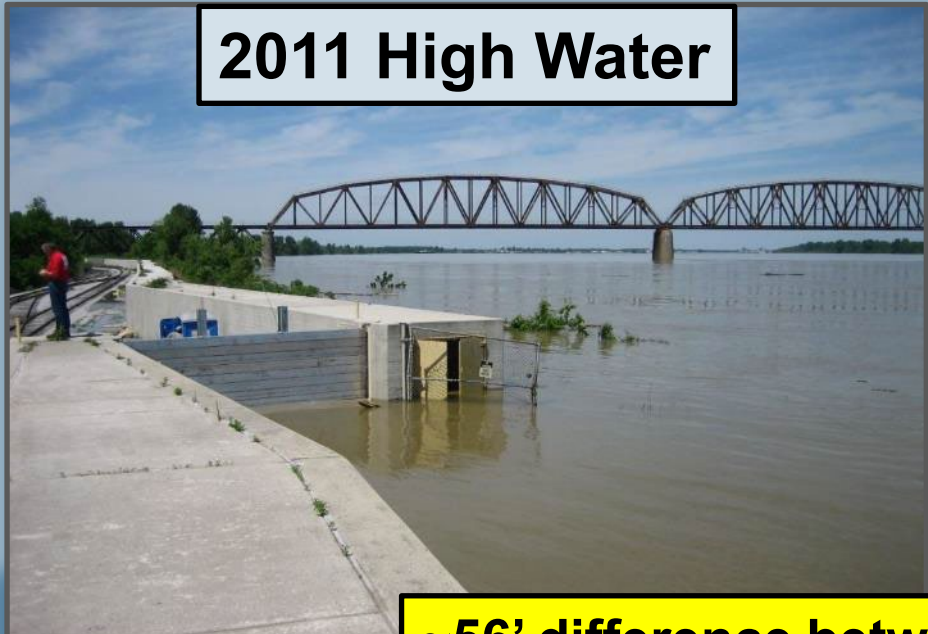


U.S. ARMY

DYNAMIC CHALLENGES OF FLOOD AND DROUGHT ON THE MS RIVER



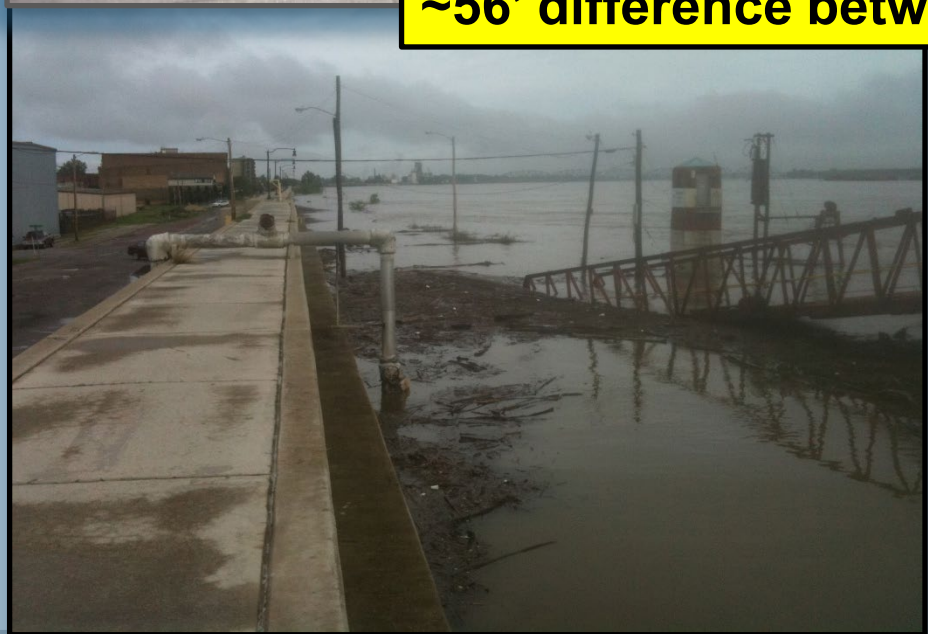
2011 High Water



2022 Low Water



~56' difference between high and low river at Cairo, IL





ENGINEERING A RESILIENT RIVER



Aerial view of dikes on the MS River



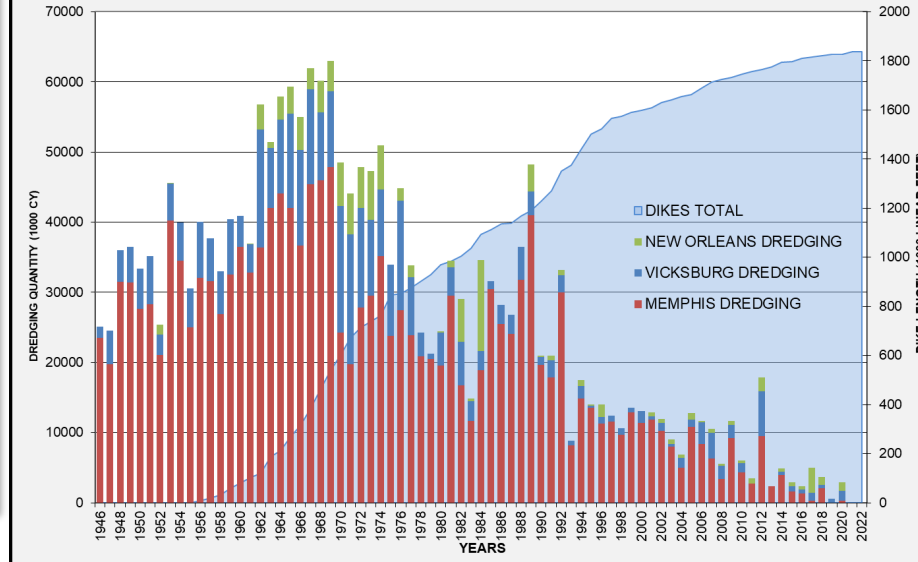
Rock Pinnacle removal at Thebes, IL



Dredging during drought facilitates NAV



MISSISSIPPI RIVER & TRIBUTARIES PROJECT
CUMULATIVE DIKE LENGTH vs DREDGING



Aerial view of Rock Pinnacles (near St. Louis)



DELIVERING THE SUPPLY CHAIN DURING EXTREME DROUGHT

MISSISSIPPI RIVER

LOW WATER EVENT 2022

START DATE OF EVENT: 01 SEP 2022

When our nation's busiest commercial waterway is impacted by low water levels, USACE works with Federal, State, Local and Industry partners to meet the challenge and keep goods moving.



(AS OF 17 NOV 2022)

VALUE TO THE NATION

MISSISSIPPI RIVER ANNUAL TONNAGE VALUE: **~\$2 TRILLION**

MISSISSIPPI RIVER ANNUAL TONNAGE: **681 MILLION SHORT TONNES OF CARGO**

TOP FIVE MISSISSIPPI RIVER COMMODITIES



PETROLEUM & PETRO-CHEM PRODUCTS



CHEMICALS & RELATED PRODUCTS



COAL



FOOD & FARM PRODUCTS
(Corn & Soybean Primarily)



CRUDE MATERIALS



CONSTANT ACTION

NUMBER OF ACTIVE DREDGES: **8 TOTAL**

CUBIC YARDS (CYS) OF DREDGED MATERIAL SINCE 01 SEP 2022: **9.2 MILLION CYS**

DOLLARS INVESTED IN LOW WATER 2022 DREDGING SINCE 01 SEP 2022: **\$29.6 MILLION**

ENOUGH TO FILL MORE THAN 2787 SWIMMING POOLS

CONSISTENT INVESTMENT | USACE MISSISSIPPI RIVER INVESTMENT SINCE 2012

BIPARTISAN INFRASTRUCTURE LAW

\$274 MILLION

To address damages to revetments and dikes.

MISSISSIPPI RIVER & TRIBUTARIES PROGRAM (MR&T)

\$1.52 BILLION

To construct over 2M revetment squares and 14 miles of dikes.

REGULATED WORKS PROGRAM

\$55.2 MILLION

To remove rock from the channel, place revetments, and construct river training structures.

REVTMENTS, DIKES, AND RIVER TRAINING STRUCTURES CONCENTRATE RIVER FLOW AND FORCE IT TO SCOUR OUT A DEEPER NAVIGATION CHANNEL WHILE REDUCING BANKLINE EROSION.



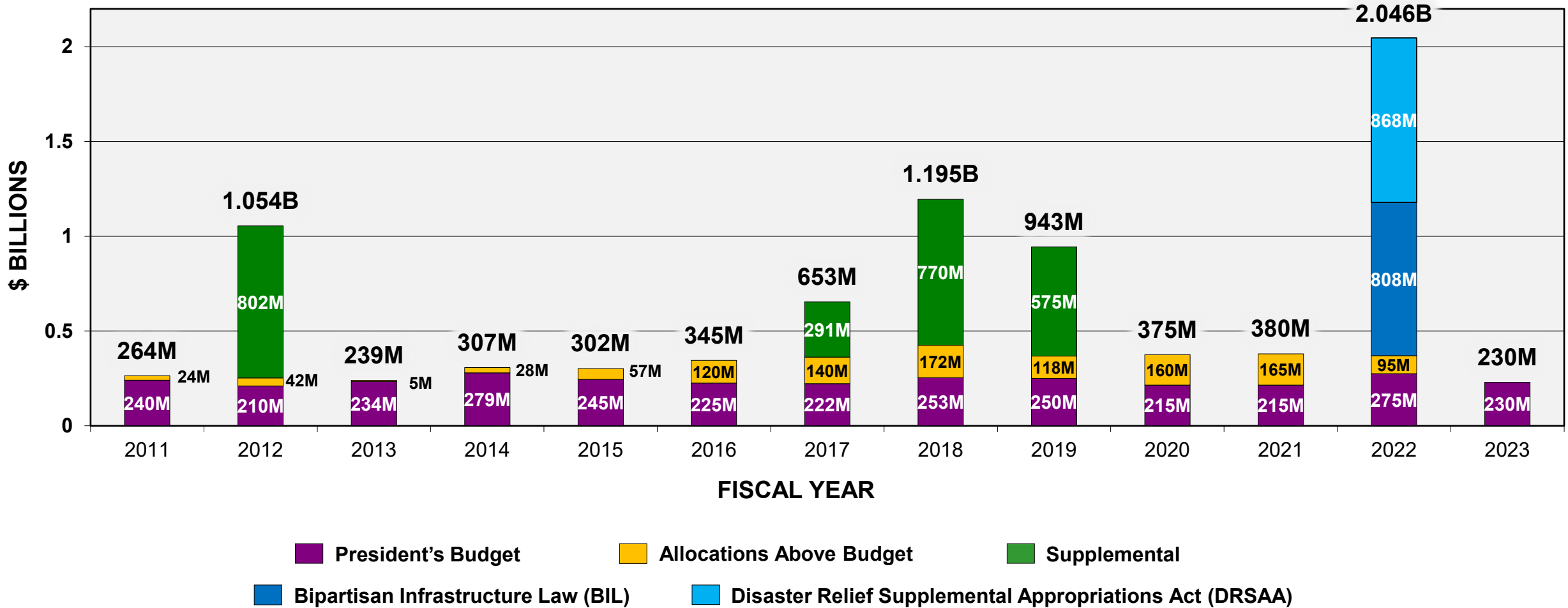
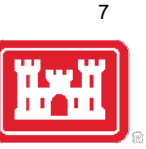
U.S. Army Corps of Engineers®

BUILDING STRONG®





MISSISSIPPI RIVER & TRIBUTARIES Funding Trends



This chart shows the budget amounts, the allocations above the budget amount, and the supplemental appropriations that have been received for civil works appropriations in MR&T (Investigations, Construction, & Maintenance) over the last several years.



MR&T – VALUE TO THE NATION



- ❖ \$17.3B invested for planning, construction, O&M since 1928
- ❖ \$2.021T flood damages prevented since 1928
- ❖ \$195B flood damages prevented in 2020
- ❖ 4.1 million people protected
- ❖ 117 to 1 return on each dollar invested
- ❖ Over 650M tons of cargo moved on the MS River system each year
- ❖ \$12.5B in transportation savings
- ❖ MR&T System is Currently ~87% complete



THE VALUE OF PARTNERSHIPS



Upper Pontch Relief Well Testing, Pontchartrain Levee District



Buck Chute Construction, MS Levee District



Baton Rouge Phase IV Construction, City of Baton Rouge



Carrollton Floodwall, New Orleans District HQ



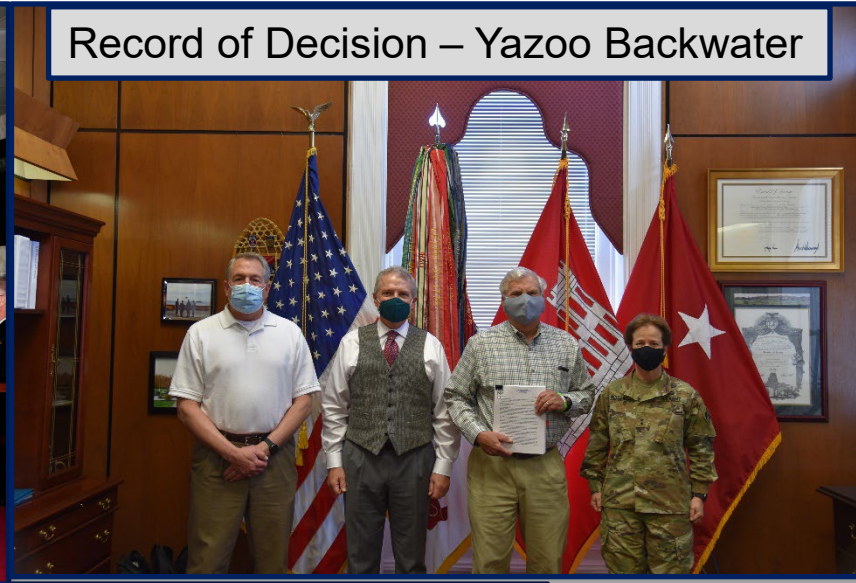


A LOOK BACK

CONG Graves testifies to MRC



Record of Decision – Yazoo Backwater



Tall enough for a tow boat



With Renee Lapeyrolerie (LA-DOTD), Sec. Wilson (LA-DOTD), and Lt. Gov Nungesser



HSDRRS Turnover Ceremony



Deepening the MS River with Gov Edwards





In Closing...

