

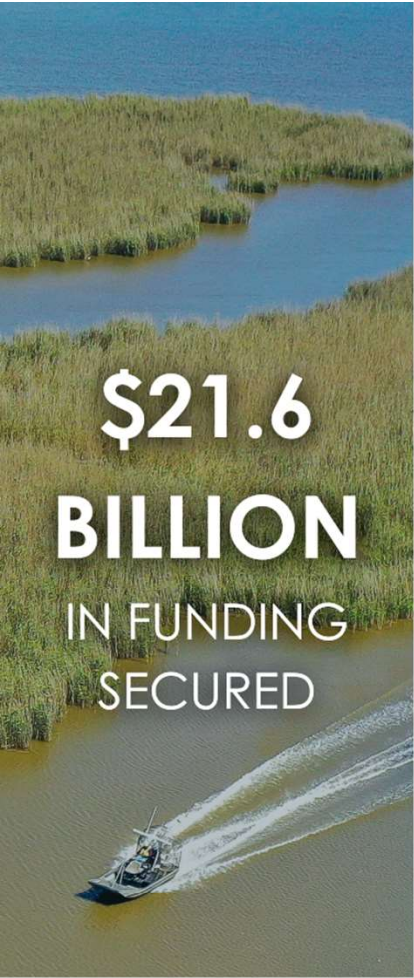
COASTAL PROTECTION AND RESTORATION AUTHORITY

# CPRA ALBL Update

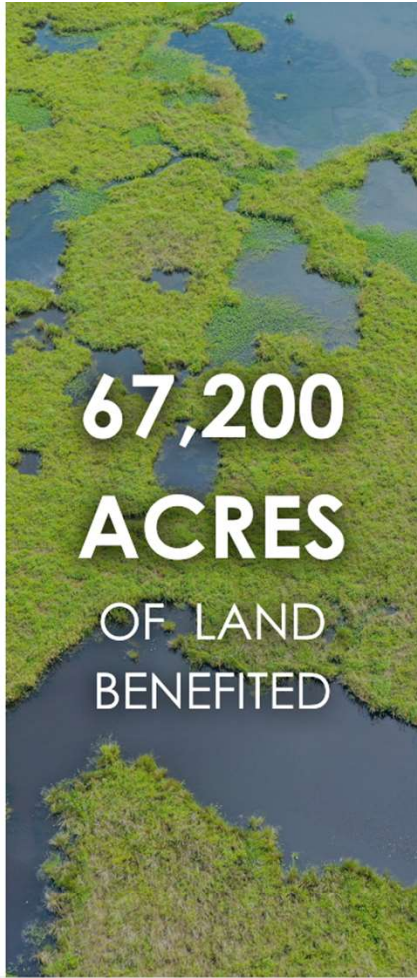
INTEGRATED ECOSYSTEM RESTORATION AND  
HURRICANE PROTECTION IN COASTAL LOUISIANA

GLENN LEDET JR., P.E., CPRA EXECUTIVE DIRECTOR





**\$21.6**  
**BILLION**  
IN FUNDING  
SECURED



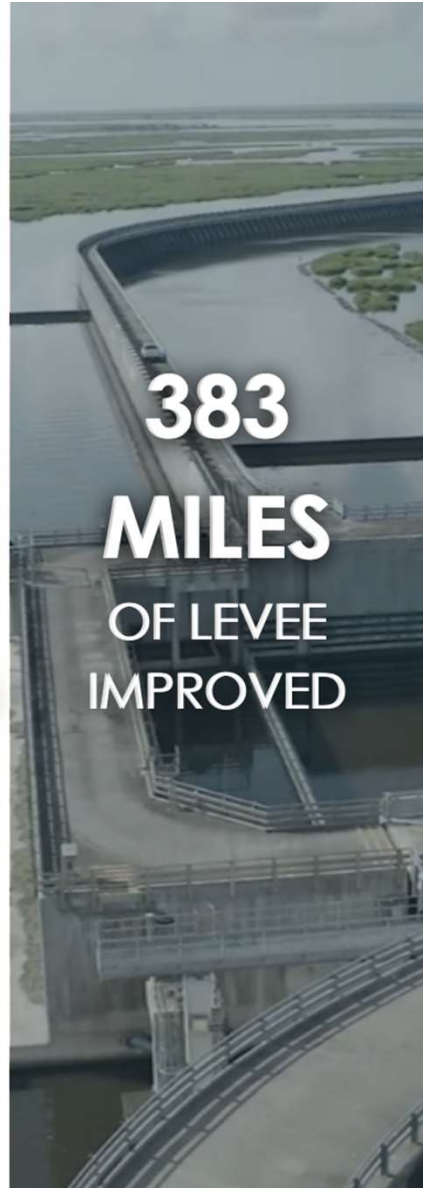
**67,200**  
**ACRES**  
OF LAND  
BENEFITED



**214**  
**MILLION**  
CUBIC YARDS OF  
FILL UTILIZED



**71.6**  
**MILES**  
OF BARRIER  
ISLANDS & BERMS  
CONSTRUCTED

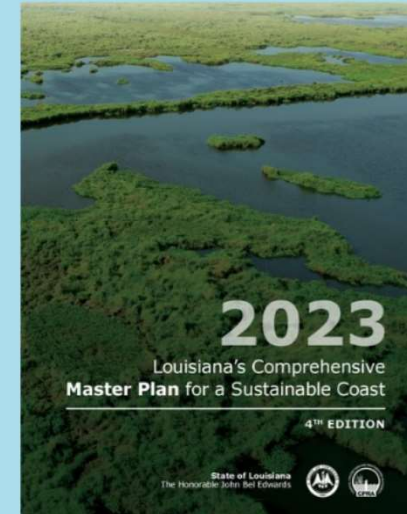
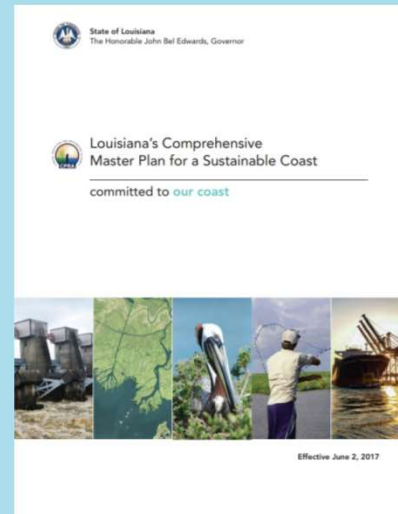
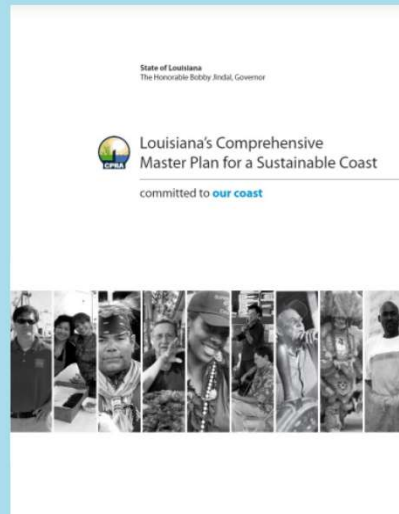
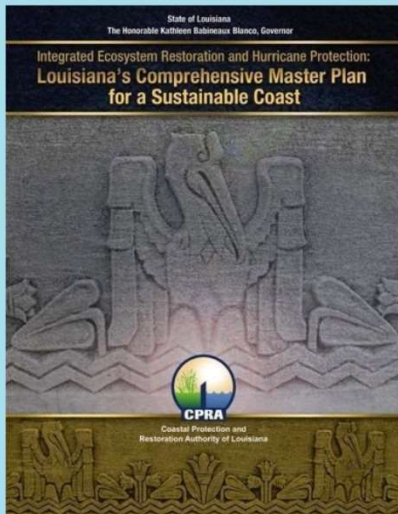


**383**  
**MILES**  
OF LEVEE  
IMPROVED

**Louisiana's Coastal Program**  
*Since 2007*

# Louisiana's Comprehensive Master Plan for a Sustainable Coast

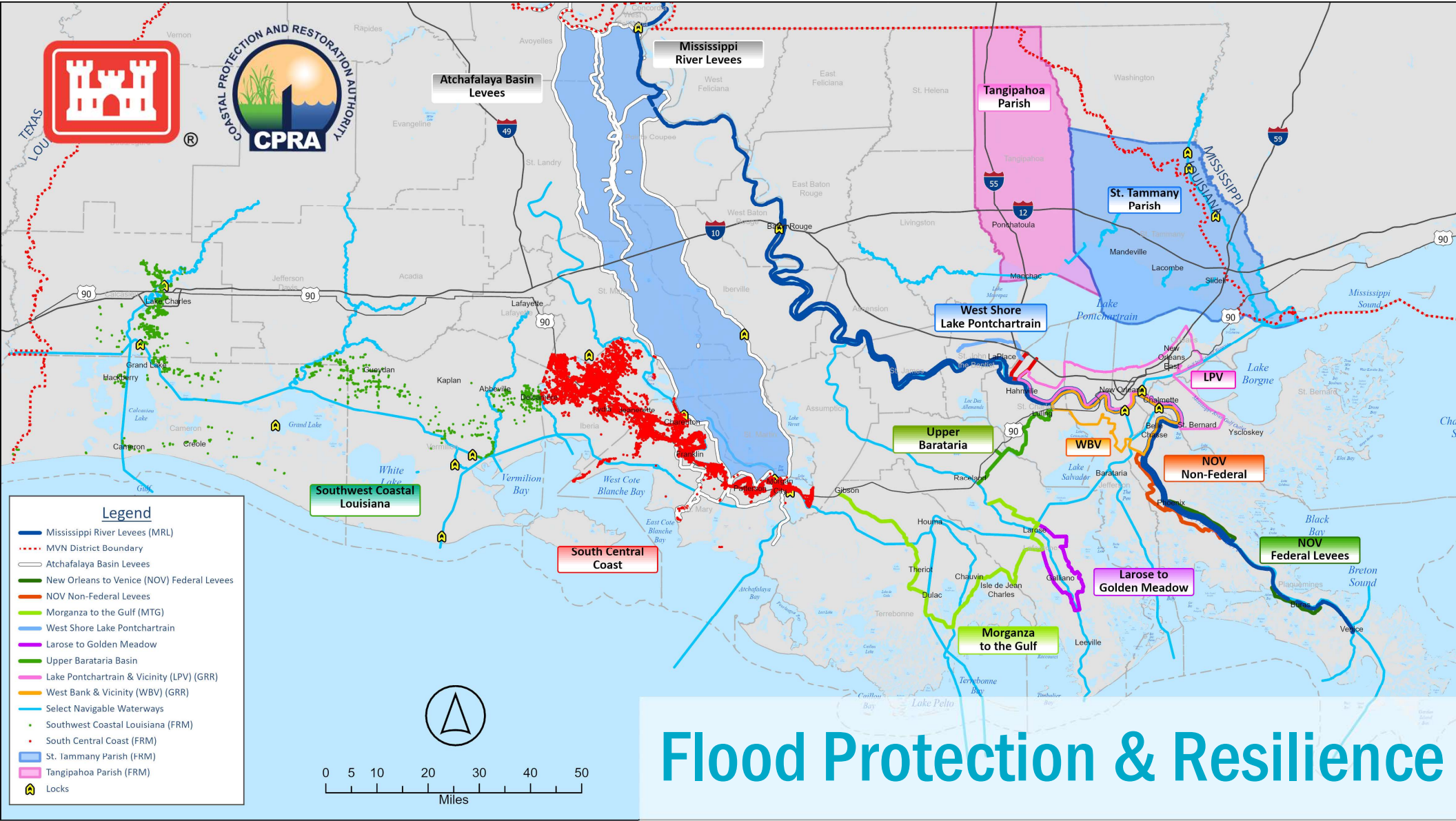
ARTICULATES AN INTEGRATED AND COMPREHENSIVE VISION FOR RESILIENCE, RESTORATION, AND PROTECTION IN COASTAL LOUISIANA



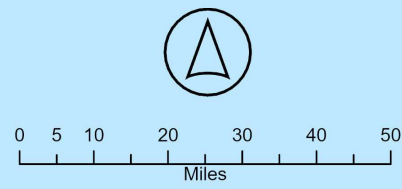
DEFINES A LIST OF PROJECTS

50-YEAR, \$50 BILLION BUDGET

UPDATED EVERY 6 YEARS



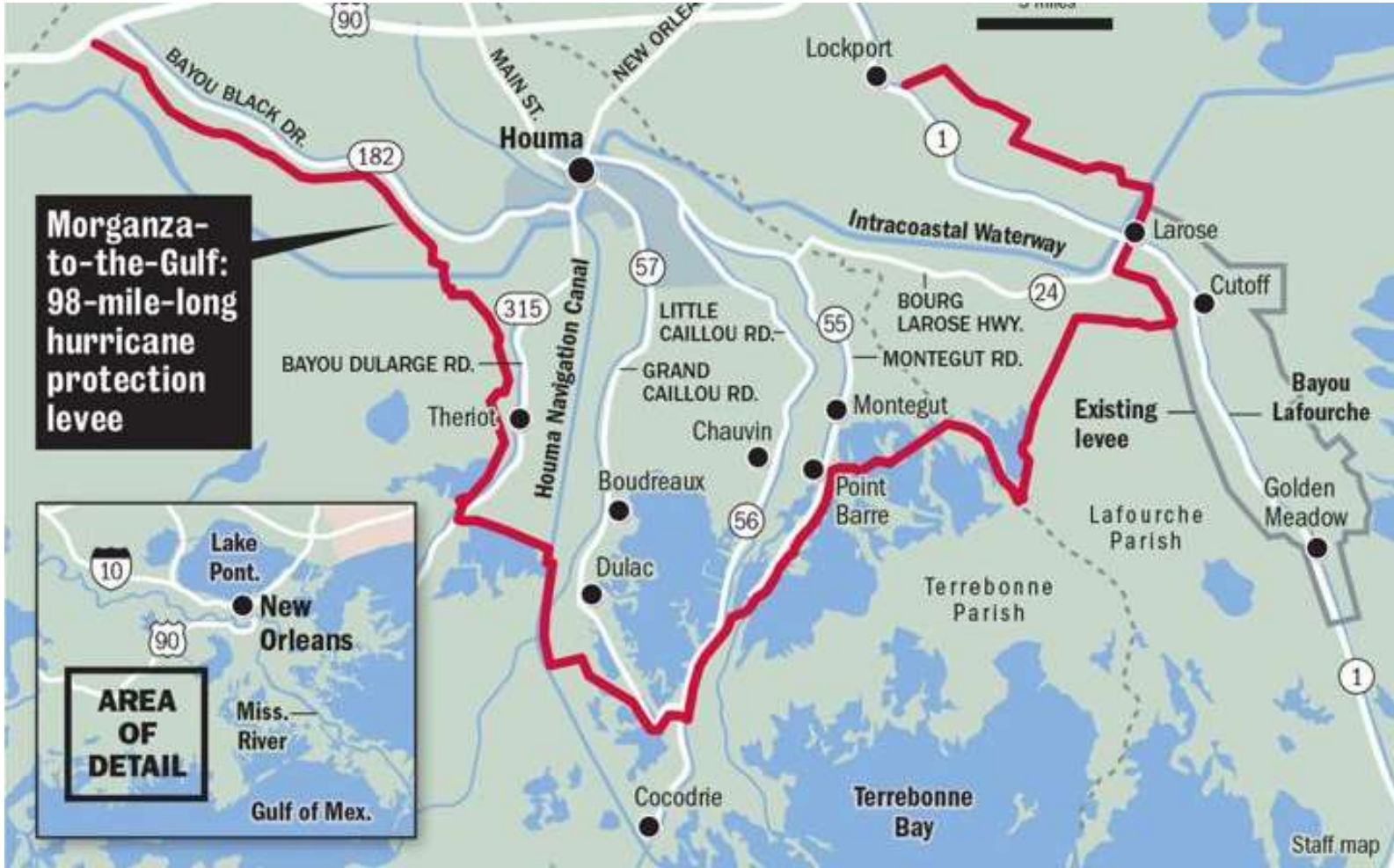
- Legend**
- Mississippi River Levees (MRL)
  - MVN District Boundary
  - Atchafalaya Basin Levees
  - New Orleans to Venice (NOV) Federal Levees
  - NOV Non-Federal Levees
  - Morganza to the Gulf (MTG)
  - West Shore Lake Pontchartrain
  - Larose to Golden Meadow
  - Upper Barataria Basin
  - Lake Pontchartrain & Vicinity (LPV) (GRR)
  - West Bank & Vicinity (WBV) (GRR)
  - Select Navigable Waterways
  - Southwest Coastal Louisiana (FRM)
  - South Central Coast (FRM)
  - St. Tammany Parish (FRM)
  - Tangipahoa Parish (FRM)
  - Locks



# Flood Protection & Resilience

# Morganza to the Gulf System

- PROVIDES PROTECTION TO 150,000 LOUISIANANS AND 1,700 MILES OF FARMLAND



**Morganza-to-the-Gulf:  
98-mile-long  
hurricane  
protection  
levee**



**NLLD**



Photo credit: Nola.com



**MORGANZA TO THE GULF  
AND LAROSE TO GOLDEN MEADOW  
FLOOD RISK REDUCTION PROJECTS**

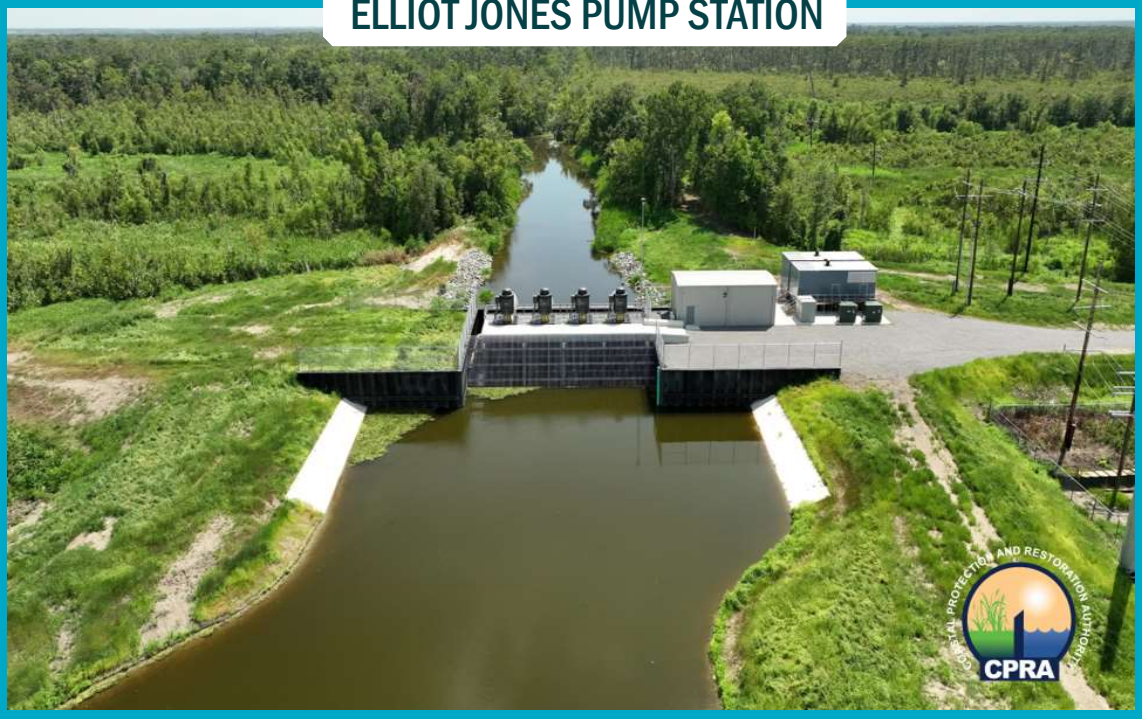
**BAYOU TERREBONNE LOCK COMPLEX**



**BAYOU PETIT CAILLOU LOCK COMPLEX**



**ELLIOT JONES PUMP STATION**



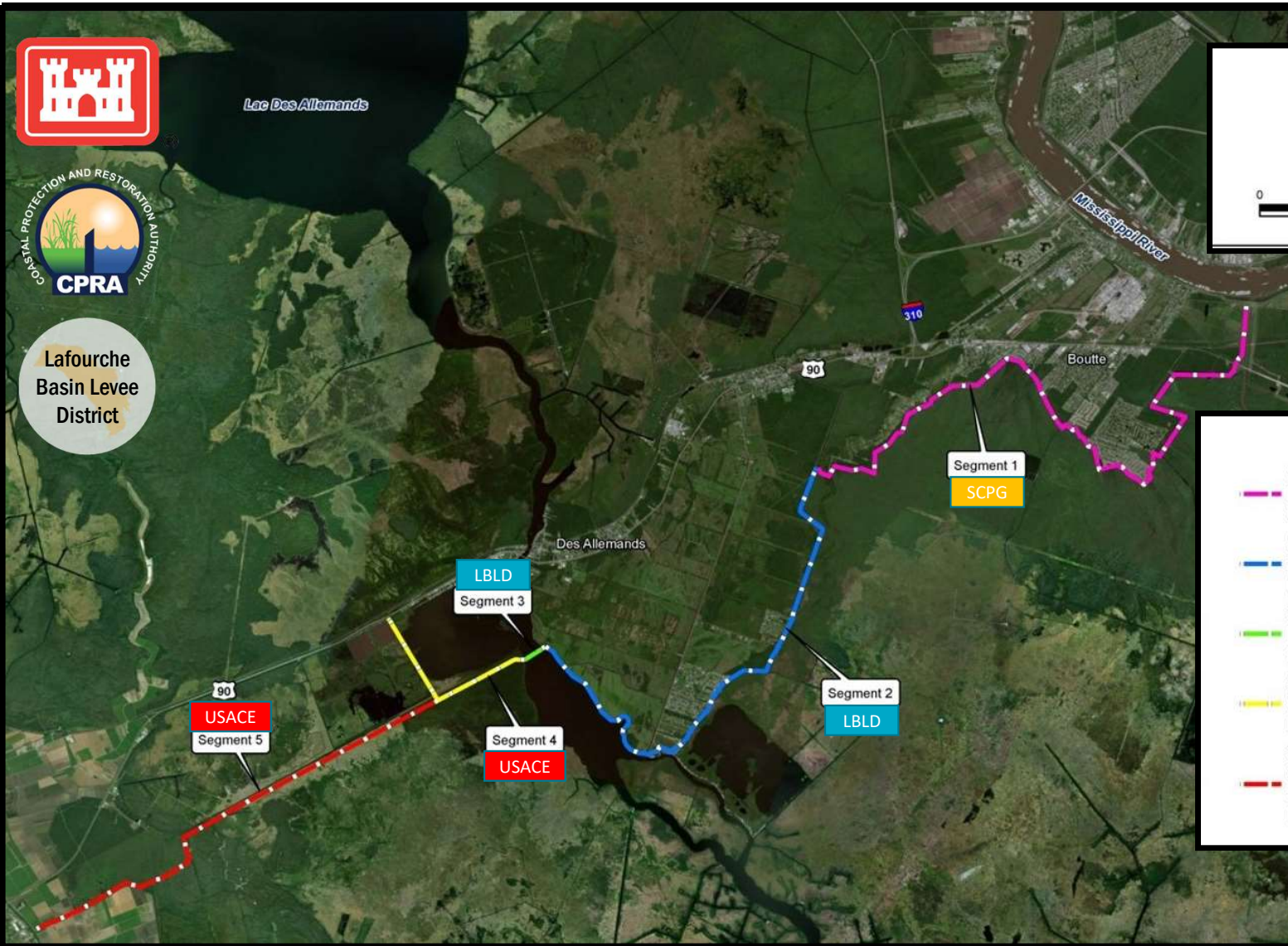
- PROPOSED TRUSS LEVEE
- EXISTING TRUSS LEVEE
- PARISH BOUNDARIES
- TELEMETRY MONITORING STATION
- LEVEE MONITORING STATION



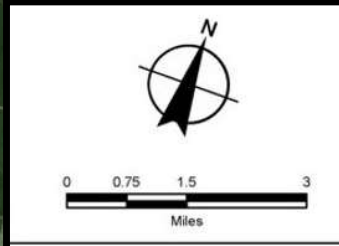
ENGINEERING, INC.  
8000 500



# Upper Barataria Risk Reduction



Lafourche Basin Levee District

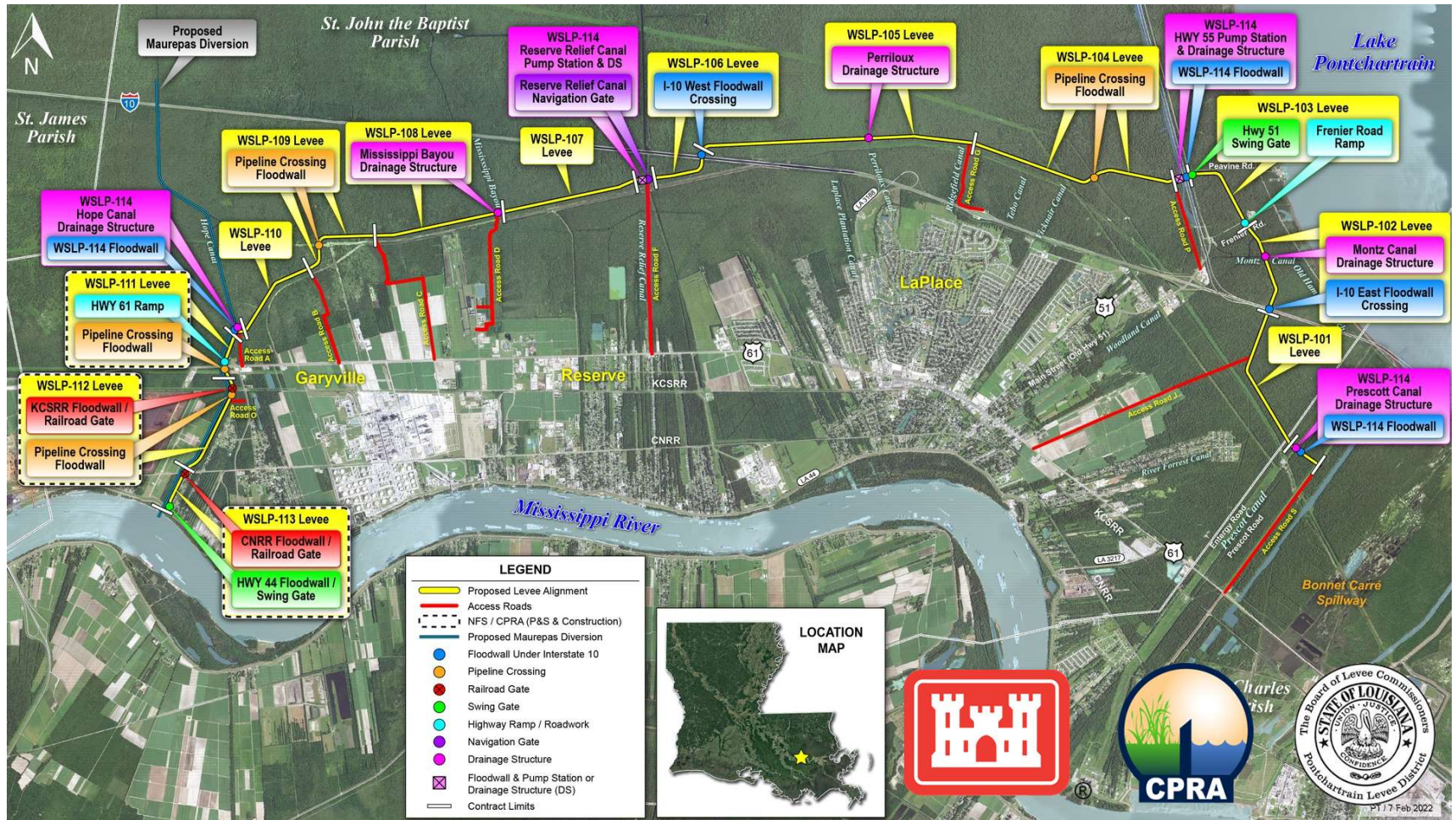


**Legend**

- Segment 1 - Davis Canal
- Segment 2 - Sunset Levee District Improvements
- Segment 3 - Bayou Des Allemands Floodgate
- Segment 4 - Godchaux - Highway 90 Tie-In
- Segment 5 - Godchaux - Highway 90 Tie-in to La. 308

# West Shore Lake Pontchartrain

- PROVIDES HURRICANE PROTECTION TO 60,000 LOUISIANANS WHO CURRENTLY HAVE LITTLE TO NO HURRICANE RISK REDUCTION IN PLACE





# St. Tammany Parish Feasibility Study

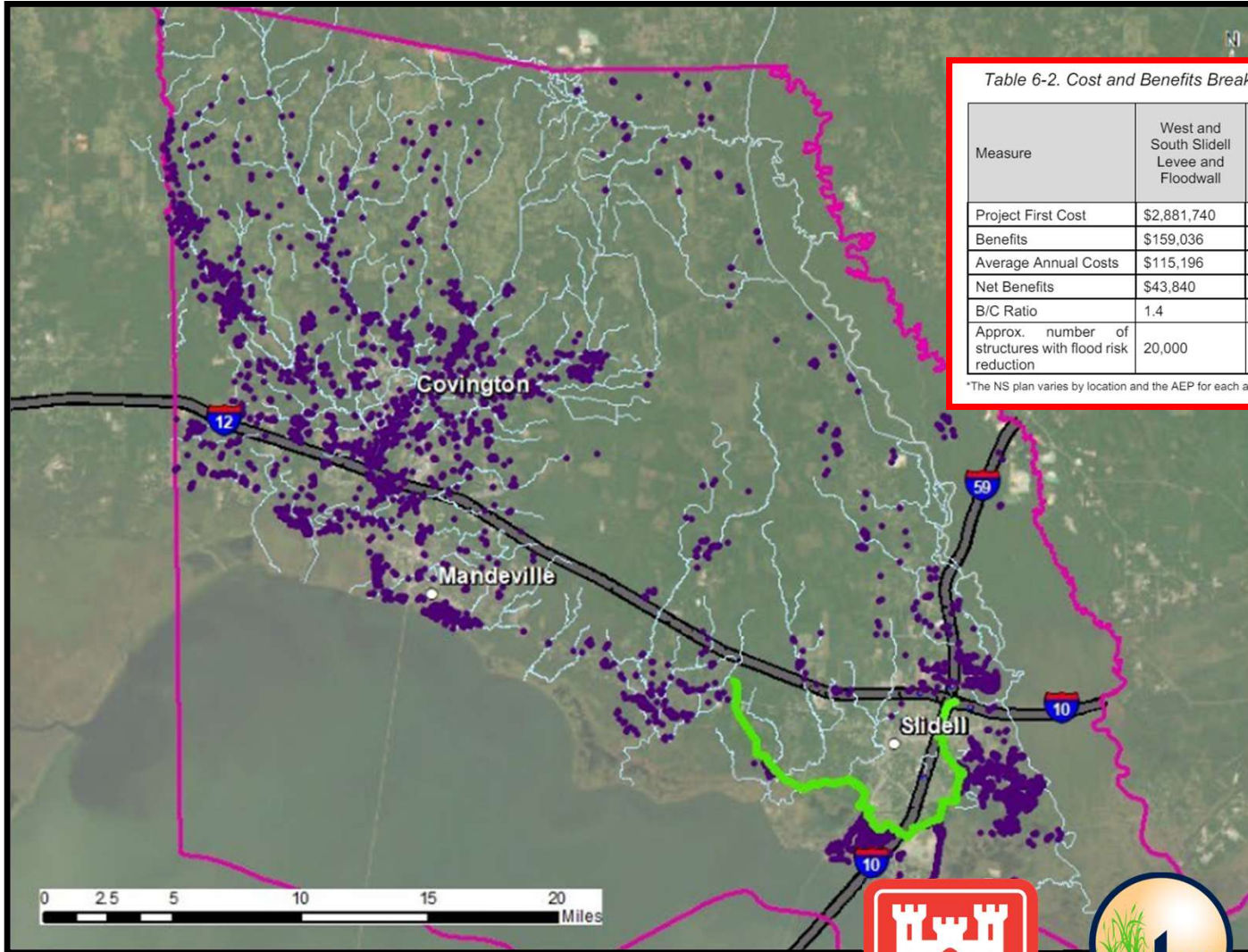




Table 6-2. Cost and Benefits Breakdown for Measures in the RP (in 1,000s)

Measure	West and South Slidell Levee and Floodwall	Nonstructural	Recommended Plan Combined Structural & NS Plan 4%, 2% and 1% AEP for areas not receiving flood damage protection from structural measures
Project First Cost	\$2,881,740	\$3,012,488	\$5,894,229
Benefits	\$159,036	\$213,455	\$372,491
Average Annual Costs	\$115,196	\$111,964	\$227,160
Net Benefits	\$43,840	\$101,491	\$145,331
B/C Ratio	1.4	1.9	1.6
Approx. number of structures with flood risk reduction	20,000	6,410	26,350

\*The NS plan varies by location and the AEP for each area.

 - South Slidell and West Slidell Levee and Floodwall System

 - Nonstructural Plan





# GREATER NEW ORLEANS HURRICANE AND STORM DAMAGE RISK REDUCTION SYSTEM (HSDRRS)



17th St. Outfall Canal PCCP



Seabrook Floodgate Complex



New Orleans East I-10 Crossing



Bonnabel Pump Station Lakefront Levee



Harvey Canal Floodwall



West Closure Complex



Eastern Tie-In

**Top 5 Coastal Wins Countdown:  
\$110 Million Credited to HSDRRS Repayment**

On Sept. 27, 2023, The U.S. Army Corps of Engineers permitted Louisiana to count \$110 million spent on two major coastal restoration projects in recent years as credits towards the state's \$1.12 billion share of the cost of the \$14.6 billion post-Katrina New Orleans area hurricane levee system.





# FY 2025 Annual Plan

*\$1.71 Billion Investment In Our Coast*

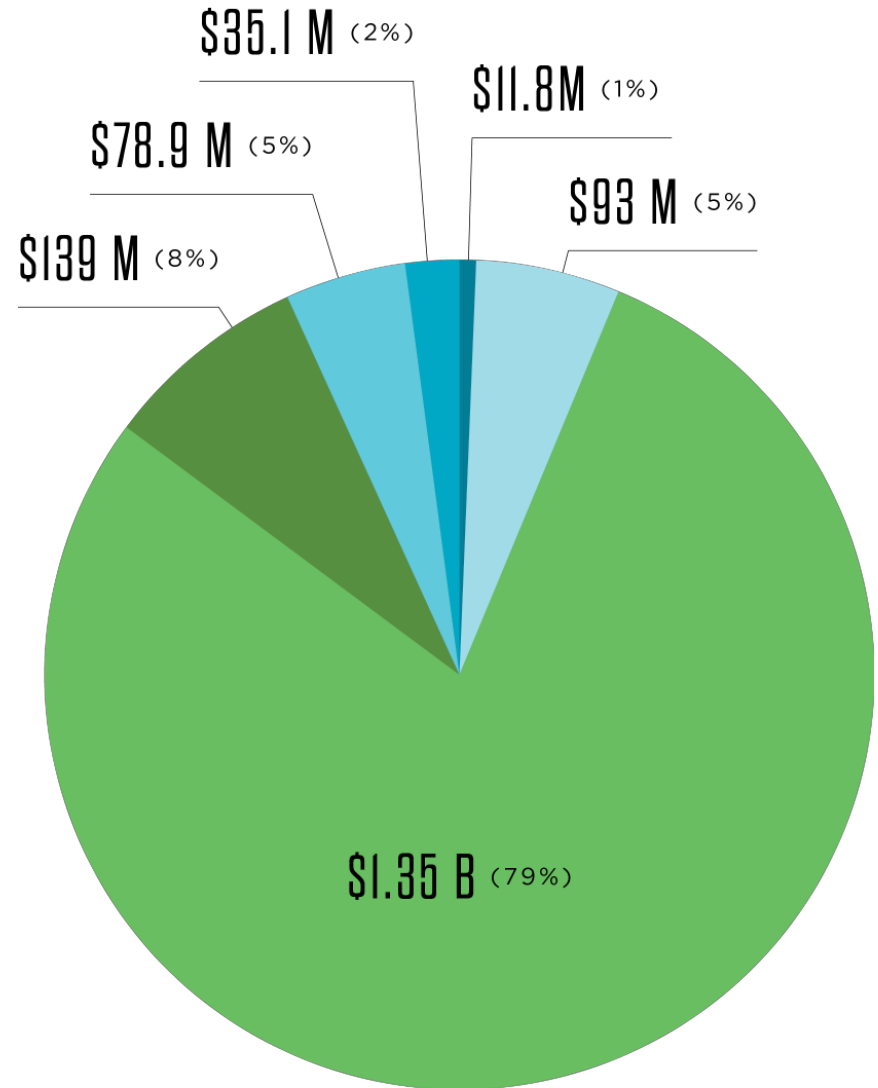
# Total Projected Expenditures FY 2025

## BY PROJECT PHASE

- Planning
- Operation, Maintenance & Monitoring
- Engineering & Design
- Ongoing Programs & Initiatives
- Construction
- Operating Costs

FY 2025 TOTAL EXPENDITURES

# \$1.71 BILLION



# \$1.71 BILLION

INVESTMENT IN OUR COAST

\$1.35 BILLION ALLOCATED FOR CONSTRUCTION

## 19 DREDGING PROJECTS

SLATED FOR  
CONSTRUCTION  
TOTALING

69.1 MILLION CUBIC YARDS  
OF SEDIMENT TO CREATE OR NOURISH MORE THAN

# 12,770 ACRES

# 136 ACTIVE PROJECTS

93% PROJECT  
ASSOCIATED  
EXPENDITURES

PLANNING

6 PROJECTS • \$11.8 MILLION

ENGINEERING & DESIGN

45 PROJECTS • \$83 MILLION

CONSTRUCTION

83 PROJECTS

\$1.35 BILLION

187,481 ACRES BENEFITED

121 MILES OF LEVEE

OM&M

190

COMPLETED  
PROJECTS

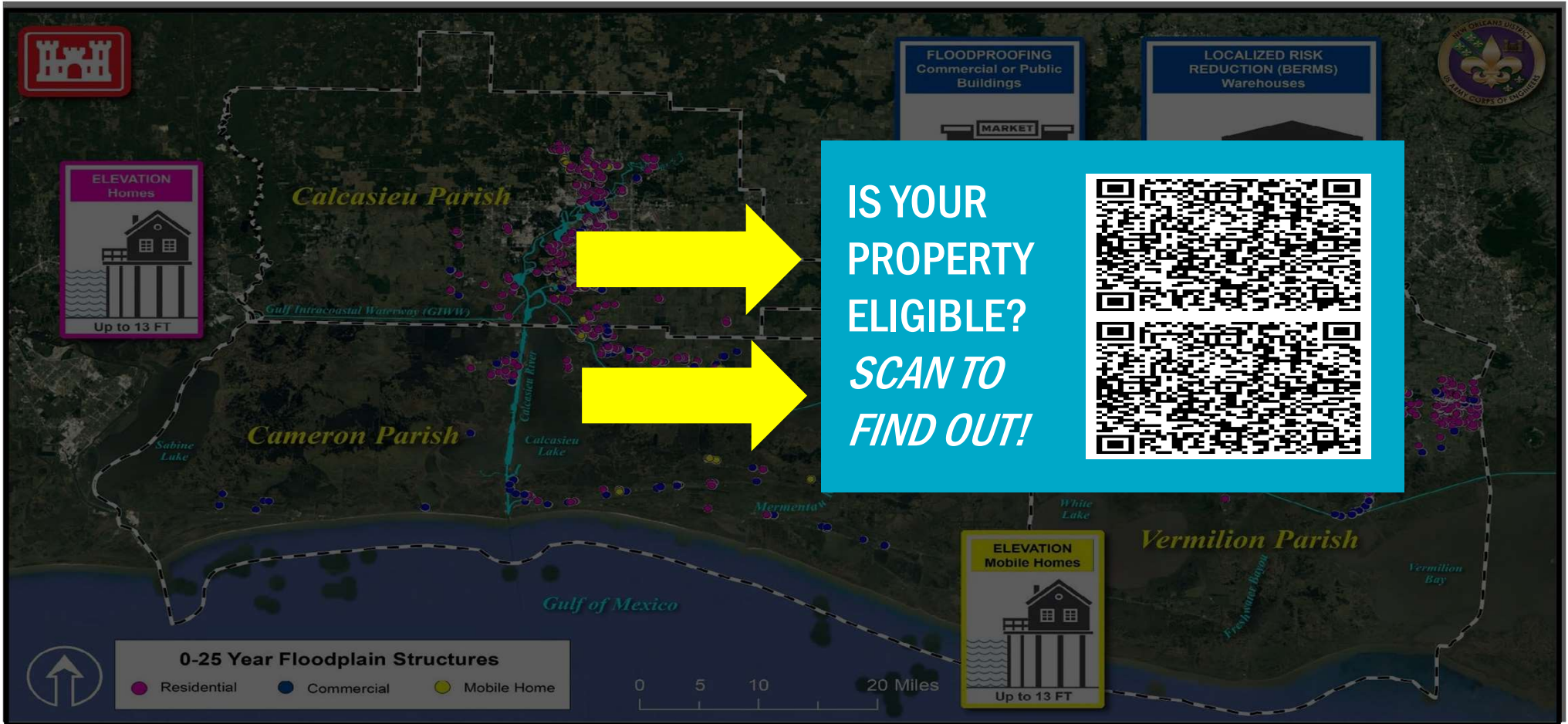
\$138 MILLION

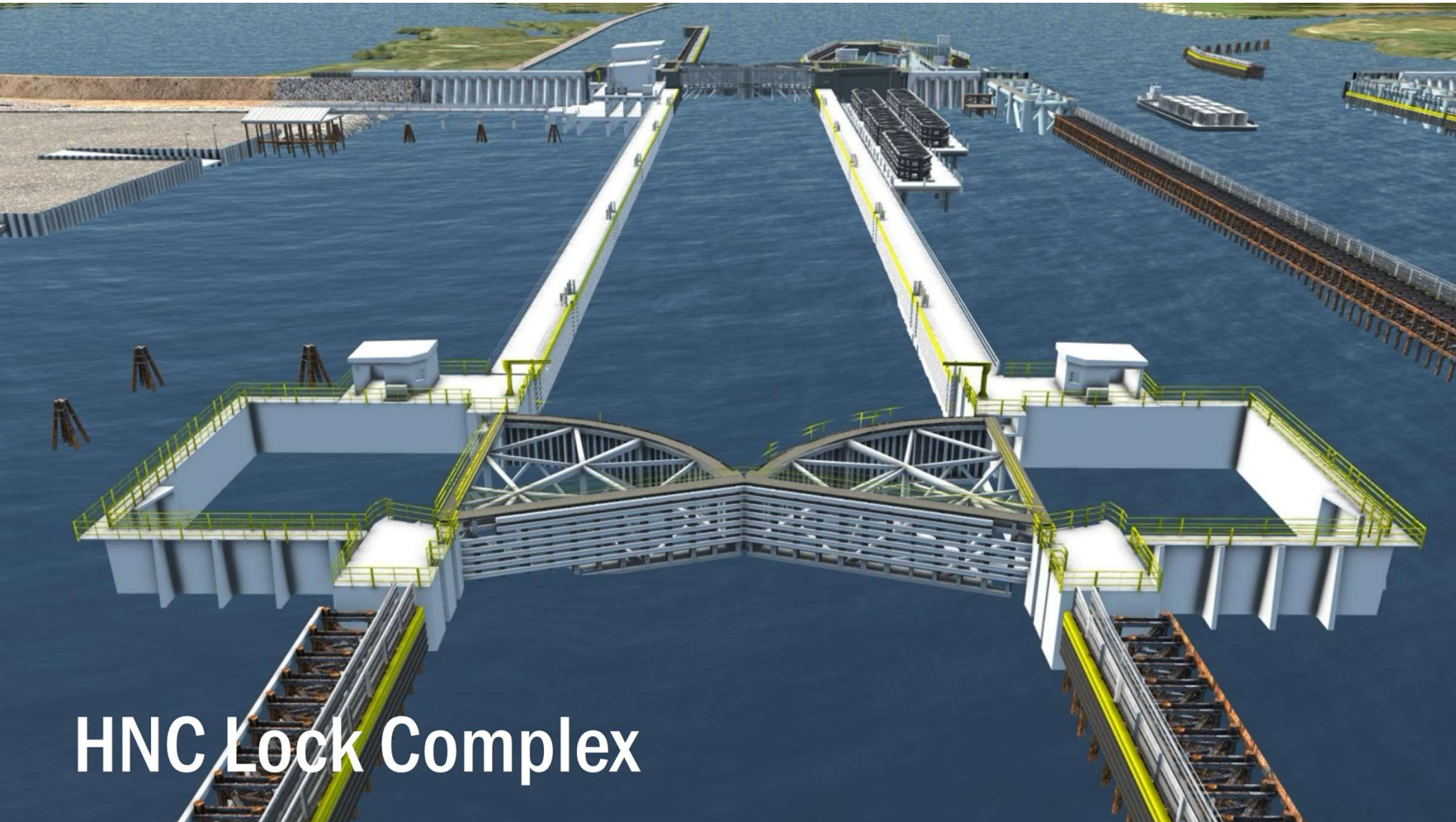
PROJECTS  
WILL  
SUPPORT

# 11,312 DIRECT JOBS

\$670 MILLION IN LABOR INCOME

# Southwest Coastal – Flood Risk Reduction Features





# HNC Lock Complex



# West Shore Lake Pontchartrain





# River Reintroduction into Maurepas Swamp



COASTAL PROTECTION AND RESTORATION AUTHORITY

**CONNECT WITH US!**



***@LOUISIANACPRA***

